

## 12-9633: Anti-CD20 antibody(1F2), IgG1 Chimeric mAb

|                           |                                    |
|---------------------------|------------------------------------|
| <b>Clonality :</b>        | Monoclonal                         |
| <b>Clone Name :</b>       | 1F2                                |
| <b>Reactivity :</b>       | Human                              |
| <b>Gene :</b>             | CD20                               |
| <b>Uniprot ID :</b>       | P11836                             |
| <b>Alternative Name :</b> | B1;Bp35;CD20;CVID5;LEU-16;MS4A2;S7 |
| <b>Isotype :</b>          | Rabbit/Human Fc chimeric IgG1      |

### Description

This gene encodes a member of the membrane-spanning 4A gene family. Members of this nascent protein family are characterized by common structural features and similar intron/exon splice boundaries and display unique expression patterns among hematopoietic cells and nonlymphoid tissues. This gene encodes a B-lymphocyte surface molecule which plays a role in the development and differentiation of B-cells into plasma cells. This family member is localized to 11q12, among a cluster of family members. Alternative splicing of this gene results in two transcript variants which encode the same protein.

### Product Info

|                            |  |
|----------------------------|--|
| <b>Amount :</b>            | 10µg / 100 µg  |
| <b>Purification :</b>      | Purified from cell culture supernatant by affinity chromatography  |
| <b>Content :</b>           | Lyophilized from sterile PBS, pH 7.4. Normally 5 % - 15% trehalose is added as protectants before lyophilization. Please see Certificate of Analysis for specific instructions of reconstitution.  |
| <b>Storage condition :</b> | Store at -20°C to -80°C for 12 months in lyophilized form. After reconstitution, if not intended for use within a month, aliquot and store at -80°C(Avoid repeated freezing and thawing). Lyophilized proteins are shipped at ambient temperature. |

### Application Note

Flow Cyt 1/100

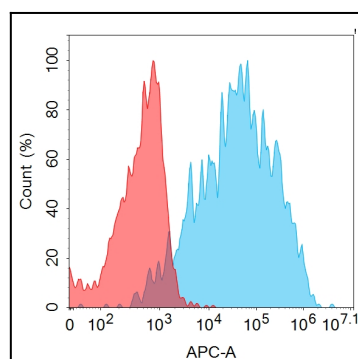


Figure 1. Flow cytometry analysis with 1µg/mL Anti-CD20 (1F2) mAb on Expi293 cells transfected with human CD20 (Blue histogram) or Expi293 transfected with irrelevant protein (Red histogram).