

12-9640: Anti-PTPRG antibody(10G10), IgG1 Chimeric mAb

Clonality :	Monoclonal
Clone Name :	10G10
Reactivity :	Human
Gene :	PTPRG
Uniprot ID :	P23470
Alternative Name :	PTPG
Isotype :	Rabbit/Human Fc chimeric IgG1

Description

The protein encoded by this gene is a member of the protein tyrosine phosphatase (PTP) family. PTPs are known to be signaling molecules that regulate a variety of cellular processes including cell growth, differentiation, mitotic cycle, and oncogenic transformation. This PTP possesses an extracellular region, a single transmembrane region, and two tandem intracytoplasmic catalytic domains, and thus represents a receptor-type PTP. The extracellular region of this PTP contains a carbonic anhydrase-like (CAH) domain, which is also found in the extracellular region of PTPRBETA/ZETA. This gene is located in a chromosomal region that is frequently deleted in renal cell carcinoma and lung carcinoma, thus is thought to be a candidate tumor suppressor gene. [provided by RefSeq, Jul 2008]

Product Info

Amount :	10µg / 100 µg
Purification :	Purified from cell culture supernatant by affinity chromatography
Content :	Lyophilized from sterile PBS, pH 7.4. Normally 5 % - 8% trehalose is added as protectants before lyophilization. Please see Certificate of Analysis for specific instructions of reconstitution.
Storage condition :	Store at -20°C to -80°C for 12 months in lyophilized form. After reconstitution, if not intended for use within a month, aliquot and store at -80°C (Avoid repeated freezing and thawing). Lyophilized proteins are shipped at ambient temperature.

Application Note

Flow Cyt 1/100

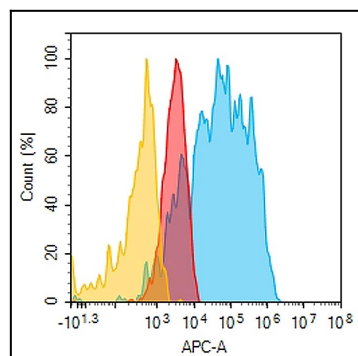


Figure 1. PTPRG protein is expressed on the surface of Expi293 cell membrane. Flow cytometry analysis with 1µg/mL Anti-PTPRG mAb on Expi293 cells transfected with human PTPRG (Blue histogram) or Expi293 transfected with irrelevant protein (Red histogram), and Isotype antibody on Expi293 transfected with irrelevant protein (Orange histogram).