

12-9641: Anti-SIGLEC15 antibody(4E12), IgG1 Chimeric mAb

Clonality :	Monoclonal
Clone Name :	4E12
Reactivity :	Human
Gene :	SIGLEC15
Uniprot ID :	Q6ZMC9
Alternative Name :	CD33 antigen-like 3;SIGLEC-15;CD33L3;sialic acid-binding Ig-like lectin 15;Siglec15;Siglec-15
Isotype :	Rabbit/Human Fc chimeric IgG1

Description

SIGLEC15 (Sialic Acid Binding Ig Like Lectin 15) is a Protein Coding gene. Diseases associated with SIGLEC15 include Osteoporosis;Juvenile and Osteoporosis. Among its related pathways are Innate Immune System and RET signaling. An important paralog of this gene is SIGLEC1.

Product Info

Amount :	10µg / 100 µg
Purification :	Purified from cell culture supernatant by affinity chromatography
Content :	Lyophilized from sterile PBS, pH 7.4. Normally 5 % – 8% trehalose is added as protectants before lyophilization. Please see Certificate of Analysis for specific instructions of reconstitution.
Storage condition :	Store at -20°C to -80°C for 12 months in lyophilized form. After reconstitution, if not intended for use within a month, aliquot and store at -80°C (Avoid repeated freezing and thawing). Lyophilized proteins are shipped at ambient temperature.

Application Note

Flow Cyt 1/100

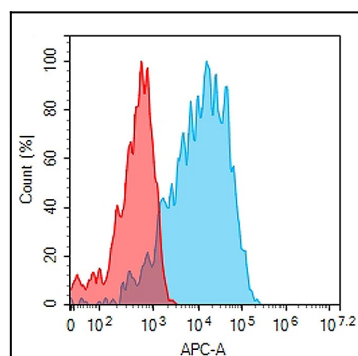


Figure 1. Flow cytometry analysis with 1µg/mL Anti-SIGLEC15 (4E12) mAb on Expi293 cells transfected with human SIGLEC15 (Blue histogram) or Expi293 transfected with irrelevant protein (Red histogram).