

12-9661: Anti-Flag antibody(7E2), Rabbit mAb

Clonality :	Monoclonal
Clone Name :	7E2
Application :	ELISA
Gene :	Flag
Uniprot ID :	/
Alternative Name :	/
Isotype :	Rabbit IgG

Description

/

Product Info

Amount :	10µg / 100 µg
Purification :	Purified from cell culture supernatant by affinity chromatography
Content :	Lyophilized from sterile PBS, pH 7.4. Normally 5 % - 8% trehalose is added as protectants before lyophilization. Please see Certificate of Analysis for specific instructions of reconstitution.
Storage condition :	Store at -20°C to -80°C for 12 months in lyophilized form. After reconstitution, if not intended for use within a month, aliquot and store at -80°C (Avoid repeated freezing and thawing). Lyophilized proteins are shipped at ambient temperature.

Application Note

ELISA 1/5000-10000

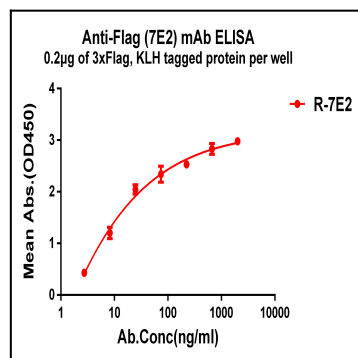


Figure 1. ELISA plate pre-coated by 1 µg/ml (100 µl/well) 3xFlag, KLH tagged protein can bind Rabbit anti-Flag monoclonal antibody(clone: 7E2).

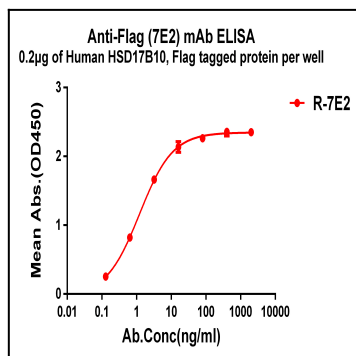


Figure 2. ELISA plate pre-coated by 2 µg/ml (100 µl/well) HSD17B10, Flag tagged protein can bind Rabbit anti-Flag monoclonal antibody(clone: 7E2).