

## 12-9662: Anti-GPR75 antibody(12B6), Rabbit mAb

<b>Clonality :</b>	Monoclonal
<b>Clone Name :</b>	12B6
<b>Reactivity :</b>	Human
<b>Gene :</b>	GPR75
<b>Uniprot ID :</b>	O95800
<b>Alternative Name :</b>	Probable G-protein coupled receptor 75
<b>Isotype :</b>	Rabbit IgG

### Description

GPR75 is a member of the G protein-coupled receptor family. GPRs are cell surface receptors that activate guanine-nucleotide binding proteins upon the binding of a ligand.[supplied by OMIM, Jul 2002]

### Product Info

<b>Amount :</b>	10µg / 100 µg
<b>Purification :</b>	Purified from cell culture supernatant by affinity chromatography
<b>Content :</b>	Lyophilized from sterile PBS, pH 7.4. Normally 5 % – 8% trehalose is added as protectants before lyophilization. Please see Certificate of Analysis for specific instructions of reconstitution.
<b>Storage condition :</b>	Store at -20°C to -80°C for 12 months in lyophilized form. After reconstitution, if not intended for use within a month, aliquot and store at -80°C (Avoid repeated freezing and thawing). Lyophilized proteins are shipped at ambient temperature.

### Application Note

Flow Cyt 1/100

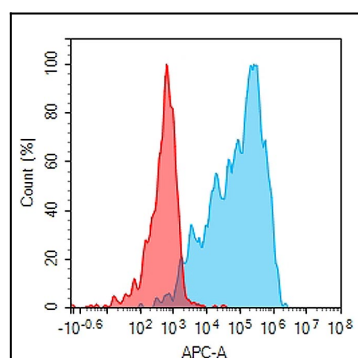


Figure 1. Flow cytometry analysis with 10µg/mL Anti-GPR75 (12B6) mAb on Expi293 cells transfected with human GPR75 (Blue histogram) or Expi293 transfected with irrelevant protein (Red histogram).