

12-90005: Anti-GM-CSFR(mavrilimumab biosimilar) mAb

Reactivity : Human
Gene : GM-CSFR
Uniprot ID : P15509
Alternative Name : GM-CSF-R-alpha; GMCSFR-alpha; GMR-alpha; CDw116; CD116; CSF2RA; CSF2R; CSF2RY
Isotype : IgG4(P108S)

Description

Research grade biosimilar. Not for use in therapeutic or diagnostic procedures for humans or animals.

Product Info

Amount : 50µg / 100µg
Content : Lyophilized from sterile PBS, pH 7.4. Normally 5 % – 8% trehalose is added as protectants before lyophilization. Please see Certificate of Analysis for specific instructions of reconstitution.
Storage condition : Store at -20°C to -80°C for 12 months in lyophilized form. After reconstitution, if not intended for use within a month, aliquot and store at -80°C (Avoid repeated freezing and thawing). Lyophilized antibodies are shipped at ambient temperature.

Application Note

Flow Cyt 1:100

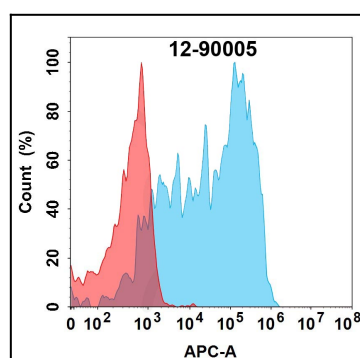


Figure 1. Flow cytometry analysis with 15µg/mL Anti-GM-CSFR(mavrilimumab biosimilar) mAb (12-90005) on Expi293 cells transfected with Human GM-CSFR protein (Blue histogram) or Expi293 transfected with irrelevant protein (Red histogram).