

12-90008: Anti-TEM1(ontuxizumab biosimilar) mAb

Application : ELISA
Reactivity : Human
Gene : TEM1
Uniprot ID : Q9HCU0
Alternative Name : CD248; CD164L1
Isotype : IgG1(E239D,M241L,S286F)

Description

Research grade biosimilar. Not for use in therapeutic or diagnostic procedures for humans or animals.

Product Info

Amount : 50µg / 100µg
Content : Lyophilized from sterile PBS, pH 7.4. Normally 5 % – 8% trehalose is added as protectants before lyophilization. Please see Certificate of Analysis for specific instructions of reconstitution.
Storage condition : Store at -20°C to -80°C for 12 months in lyophilized form. After reconstitution, if not intended for use within a month, aliquot and store at -80°C (Avoid repeated freezing and thawing). Lyophilized antibodies are shipped at ambient temperature.

Application Note

ELISA 1:5000-10000, Flow Cyt 1:100

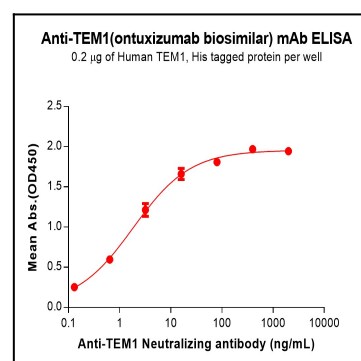


Figure 1. ELISA plate pre-coated by 2 µg/mL (100 µL/well) Human TEM1 Protein, His Tag can bind Anti-TEM1(ontuxizumab biosimilar) mAb (12-90008) in a linear range of 0.13–16 ng/mL.

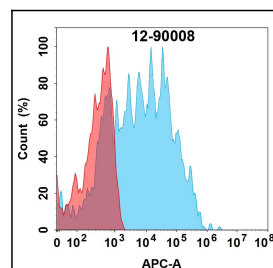


Figure 2. Flow cytometry analysis with 1µg/mL Anti-TEM1(ontuxizumab biosimilar) mAb (12-90008) on Expi293 cells transfected with Human TEM1 protein (Blue histogram) or Expi293 transfected with irrelevant protein (Red histogram).