

## 12-90018: Anti-CRTAM(HuC110-34 biosimilar) mAb

**Application :** ELISA  
**Reactivity :** Human  
**Gene :** CRTAM  
**Uniprot ID :** O95727  
**Alternative Name :** CD355  
**Isotype :** IgG1 (L115E)

### Description

Research grade biosimilar. Not for use in therapeutic or diagnostic procedures for humans or animals.

### Product Info

**Amount :** 50µg / 100µg  
**Content :** Lyophilized from sterile PBS, pH 7.4. Normally 5 % – 8% trehalose is added as protectants before lyophilization. Please see Certificate of Analysis for specific instructions of reconstitution.  
**Storage condition :** Store at -20°C to -80°C for 12 months in lyophilized form. After reconstitution, if not intended for use within a month, aliquot and store at -80°C (Avoid repeated freezing and thawing). Lyophilized antibodies are shipped at ambient temperature.

### Application Note

ELISA 1:5000-10000, Flow Cyt 1:100

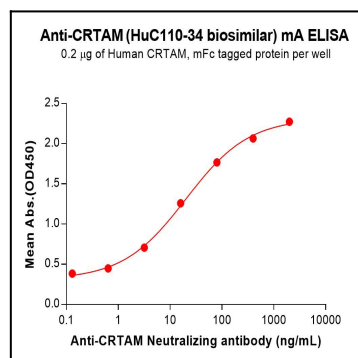


Figure 1. ELISA plate pre-coated by 2 µg/mL (100 µL/well) Human CRTAM Protein, mFc Tag can bind Anti-CRTAM(HuC110-34 biosimilar) mAb (12-90018) in a linear range of 3.20-400 ng/mL.

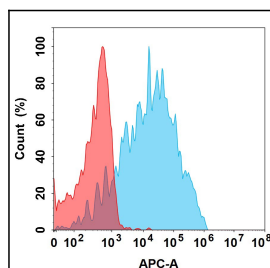


Figure 2. Flow cytometry analysis with 15µg/mL Anti-CRTAM(HuC110-34 biosimilar) mAb (12-90018) on Expi293 cells transfected with Human CRTAM protein (Blue histogram) or Expi293 transfected with irrelevant protein (Red histogram).