

## 12-90026: Anti-IL1RL2(spesolimab biosimilar) mAb

**Reactivity :** Human  
**Gene :** IL1RL2  
**Uniprot ID :** Q9HB29  
**Alternative Name :** ILRL2; IL-36R; IL1RRP2; IL-36R  
**Isotype :** IgG1(K97R,L117A,L118A)

### Description

Research grade biosimilar. Not for use in therapeutic or diagnostic procedures for humans or animals.

### Product Info

**Amount :** 50µg / 100µg  
**Content :** Lyophilized from sterile PBS, pH 7.4. Normally 5 % – 8% trehalose is added as protectants before lyophilization. Please see Certificate of Analysis for specific instructions of reconstitution.  
**Storage condition :** Store at -20°C to -80°C for 12 months in lyophilized form. After reconstitution, if not intended for use within a month, aliquot and store at -80°C (Avoid repeated freezing and thawing). Lyophilized antibodies are shipped at ambient temperature.

### Application Note

Flow Cyt 1:100

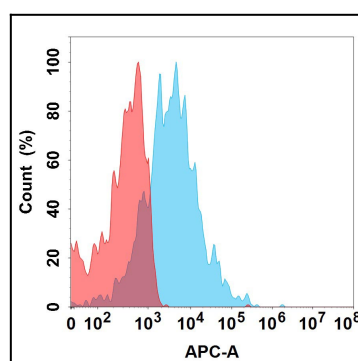


Figure 1. Flow cytometry analysis with 1µg/mL Anti-IL1RL2(spesolimab biosimilar) mAb (12-90026) on Expi293 cells transfected with Human IL1RL2 protein (Blue histogram) or Expi293 transfected with irrelevant protein (Red histogram).

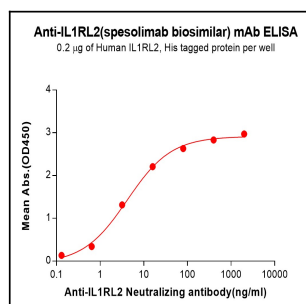


Figure 2. ELISA plate pre-coated by 2 µg/mL (100 µL/well) Human IL1RL2 Protein, His Tag can bind Anti-IL1RL2 (spesolimab biosimilar) mAb (12-90026) in a linear range of 0.64–80 ng/mL.