

## 12-90031: Anti-IL1RAP(nadunolimab biosimilar) mAb

<b>Application :</b>	ELISA
<b>Reactivity :</b>	Human
<b>Gene :</b>	IL1RAP
<b>Uniprot ID :</b>	Q9NPH3
<b>Alternative Name :</b>	IL1AP; C3orf13; IL1R3; IL-1R-3; IL-1R3
<b>Isotype :</b>	IgG1

### Description

Research grade biosimilar. Not for use in therapeutic or diagnostic procedures for humans or animals.

### Product Info

<b>Amount :</b>	50µg / 100µg
<b>Content :</b>	Lyophilized from sterile PBS, pH 7.4. Normally 5 % – 8% trehalose is added as protectants before lyophilization. Please see Certificate of Analysis for specific instructions of reconstitution.
<b>Storage condition :</b>	Store at -20°C to -80°C for 12 months in lyophilized form. After reconstitution, if not intended for use within a month, aliquot and store at -80°C (Avoid repeated freezing and thawing). Lyophilized antibodies are shipped at ambient temperature.

### Application Note

ELISA 1:5000-10000, Flow Cyt 1:100

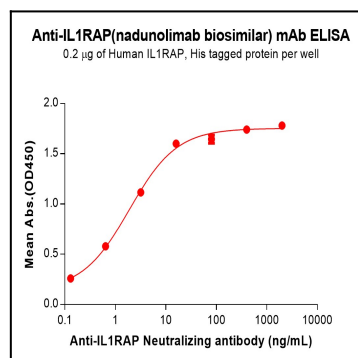


Figure 1. ELISA plate pre-coated by 2 µg/mL (100 µL/well) Human IL1RAP Protein, His Tag can bind Anti-IL1RAP(nadunolimab biosimilar) mAb (12-90031) in a linear range of 0.13-16 ng/mL.

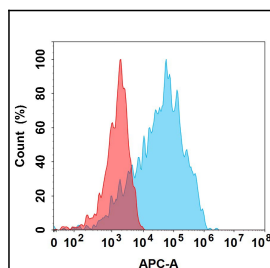


Figure 2. Flow cytometry analysis with 15µg/mL Anti-IL1RAP(nadunolimab biosimilar) mAb (12-90031) on Expi293 cells transfected with Human IL1RAP and IL1RA protein (Blue histogram) or Expi293 transfected with Human IL1RA protein (Red histogram).