

12-90034: Anti-MET(emibetuzumab biosimilar) mAb

Application : ELISA
Reactivity : Human
Gene : MET
Uniprot ID : P08581
Alternative Name : MET
Isotype : IgG4(F114A,L115A)

Description

Research grade biosimilar. Not for use in therapeutic or diagnostic procedures for humans or animals.

Product Info

Amount : 50µg / 100µg
Content : Lyophilized from sterile PBS, pH 7.4. Normally 5 % – 8% trehalose is added as protectants before lyophilization. Please see Certificate of Analysis for specific instructions of reconstitution.
Storage condition : Store at -20°C to -80°C for 12 months in lyophilized form. After reconstitution, if not intended for use within a month, aliquot and store at -80°C (Avoid repeated freezing and thawing). Lyophilized antibodies are shipped at ambient temperature.

Application Note

ELISA 1:5000-10000, Flow Cyt 1:100

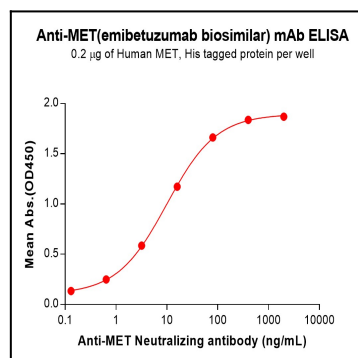


Figure 1. ELISA plate pre-coated by 2 µg/mL (100 µL/well) Human MET Protein, His Tag can bind Anti-MET(emibetuzumab biosimilar) mAb (12-90034) in a linear range of 0.64-80 ng/mL.

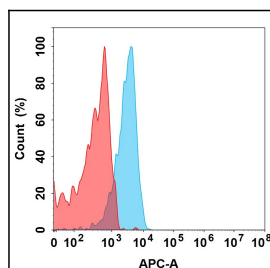


Figure 2. MET protein is expressed on the surface of Expi293 cell membrane. Flow cytometry analysis with 1 µg/mL Anti-MET (emibetuzumab biosimilar) mAb (12-90034) (Blue histogram) or isotype control mAb (Red histogram) on Expi293 cells.