

36-1795: Monoclonal Antibody to CD106 / VCAM1 (Activated Endothelial Cell Marker)(Clone : VCAM1/843)

Clonality :	Monoclonal
Clone Name :	VCAM1/843
Application :	IHC
Reactivity :	Human
Gene :	VCAM1
Gene ID :	7412
Uniprot ID :	P19320
Format :	Purified
Alternative Name :	VCAM1,L1CAM
Isotype :	Mouse IgG1, kappa
Immunogen Information :	Recombinant human VCAM1 protein

Description

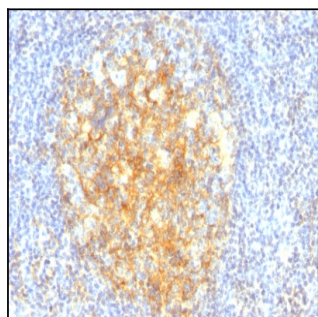
Recognizes a protein of 110kDa, identified as CD106 (also known as vascular cell adhesion molecule-1 (VCAM-1) and INCAM-100). CD106 is a member of the Ig superfamily of adhesion molecules and is expressed at high levels on cytokine stimulated vascular endothelial cells, and at minimal levels on un-stimulated endothelial cells. It is also present on follicular and inter-follicular dendritic cells of lymph nodes, myoblasts, and some macrophages. CD106 serves as a ligand for leukocyte integrin (VLA-4 or CD49d/CD29) and mediates cell adhesion of leukocytes to activated endothelium. It plays a role in various immunological and inflammatory responses.

Product Info

Amount :	100 µg
Purification :	Affinity Chromatography
Content :	100 µg in 500 µl PBS containing 0.05% BSA and 0.05% sodium azide. Sodium azide is highly toxic.
Storage condition :	Store the antibody at 4°C; stable for 6 months. For long-term storage; store at -20°C. Avoid repeated freeze and thaw cycles.

Application Note

Immunohistochemistry (Formalin-fixed) (1-2ug/ml for 30 minutes at RT)(Staining of formalin-fixed tissues requires heating tissue sections in 10mM Tris with 1mM EDTA, pH 9.0, for 45 min at 95°C followed by cooling at RT for 20 minutes)



Formalin-fixed, paraffin-embedded human Tonsil stained with CD106 Monoclonal Antibody (VCAM1/843).