

12-90039: Anti-EGFR(depatuxizumab biosimilar) mAb

Application : ELISA
Reactivity : Human
Gene : EGFR
Uniprot ID : P00533
Alternative Name : ERBB; ERBB1; HER1
Isotype : IgG1(E239D, M241L)

Description

Research grade biosimilar. Not for use in therapeutic or diagnostic procedures for humans or animals.

Product Info

Amount : 50µg / 100µg
Content : Lyophilized from sterile PBS, pH 7.4. Normally 5 % – 8% trehalose is added as protectants before lyophilization. Please see Certificate of Analysis for specific instructions of reconstitution.
Storage condition : Store at -20°C to -80°C for 12 months in lyophilized form. After reconstitution, if not intended for use within a month, aliquot and store at -80°C (Avoid repeated freezing and thawing). Lyophilized antibodies are shipped at ambient temperature.

Application Note

ELISA 1:5000-10000, Flow Cyt 1:100

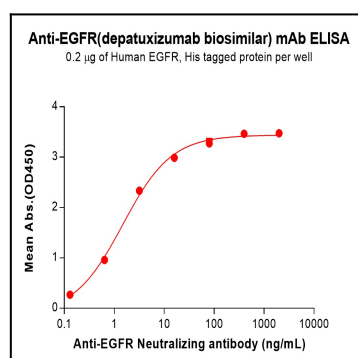


Figure 1. ELISA plate pre-coated by 2 µg/mL (100 µL/well) Human EGFR Protein, His Tag can bind Anti-EGFR(depatuxizumab biosimilar) mAb (12-90039) in a linear range of 0.13-16 ng/mL.

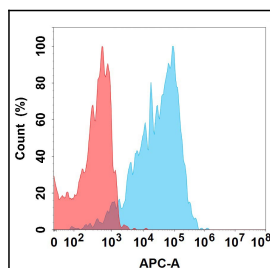


Figure 2. Flow cytometry analysis with 15µg/mL Anti-EGFR(depatuxizumab biosimilar) mAb 12-90039 on Expi293 cells transfected with Human EGFR protein (Blue histogram) or Expi293 transfected with irrelevant protein (Red histogram).

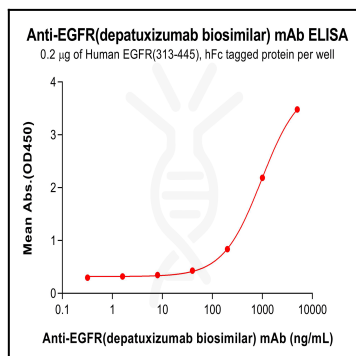


Figure 3. ELISA plate pre-coated by 2 µg/mL (100 µL/well) Human EGFR(313-445) Protein, hFc Tag can bind Anti-EGFR(depatuxizumab biosimilar) mAb (BME100252) in a linear range of 200–1000 ng/mL. Mouse anti-human Fab-specific antibody was used as detection antibody.