

### 36-1810: Monoclonal Antibody to Wilm's Tumor 1 (WT1) (Wilm's Tumor & Mesothelial Marker)(Clone : WT1/857)

<b>Clonality :</b>	Monoclonal
<b>Clone Name :</b>	WT1/857
<b>Application :</b>	IHC
<b>Reactivity :</b>	Human, Rat
<b>Gene :</b>	WT1
<b>Gene ID :</b>	7490
<b>Uniprot ID :</b>	P19544
<b>Format :</b>	Purified
<b>Alternative Name :</b>	WT1
<b>Isotype :</b>	Mouse IgG1, kappa
<b>Immunogen Information :</b>	Recombinant human WT1 protein

#### Description

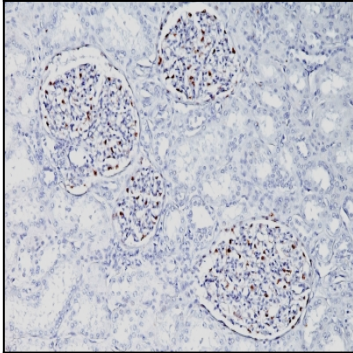
Recognizes a 47-55kDa-tumor suppressor protein, identified as Wilm's Tumor (WT1) protein. The antibody reacts with all isoforms of the full-length WT1 and also identifies WT1 lacking exon 2-encoded amino acids, frequently found in subsets of sporadic Wilm s tumors. WT1, a sporadic and familial pediatric kidney tumor, is genetically heterogeneous. Wilm s tumor is associated with mutations of WT1, a zinc-finger transcription factor that is essential for the development of the metanephric kidney and the urogenital system. The WT1 gene is normally expressed in fetal kidney and mesothelium, and its expression has been suggested as a marker for Wilm s tumor and mesothelioma. WT1 protein has been identified in proliferative mesothelial cells, malignant mesothelioma, ovarian carcinoma, gonadoblastoma, nephroblastoma, and desmoplastic small round cell tumor. Lung adenocarcinomas rarely stain positive with this antibody. WT1 protein expression in mesothelial cells has become a reliable marker for the diagnosis of mesotheliomas.

#### Product Info

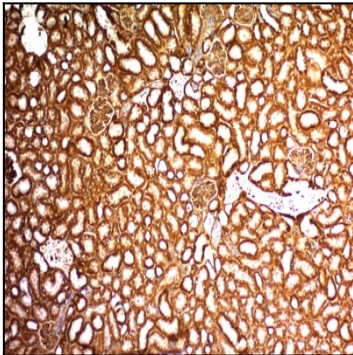
<b>Amount :</b>	100 µg
<b>Purification :</b>	Affinity Chromatography
<b>Content :</b>	100 µg in 500 µl PBS containing 0.05% BSA and 0.05% sodium azide. Sodium azide is highly toxic.
<b>Storage condition :</b>	Store the antibody at 4°C; stable for 6 months. For long-term storage; store at -20°C. Avoid repeated freeze and thaw cycles.

#### Application Note

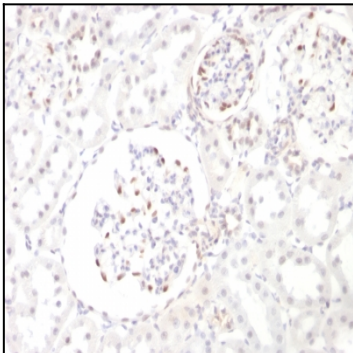
Immunohistochemistry (Formalin-fixed) (1-2ug/ml for 30 minutes at RT)(Staining of formalin-fixed tissues requires heating tissue sections in 10mM Tris with 1mM EDTA, pH 9.0, for 45 min at 95&degC followed by cooling at RT for 20 minutes);



Formalin-fixed, paraffin-embedded human Fetal Kidney stained with WT1 Monoclonal Antibody (WT1/857).



Formalin-fixed, paraffin-embedded Mouse Kidney stained with WT1 Monoclonal Antibody (WT1/857).



Formalin-fixed, paraffin-embedded Rat kidney stained with WT1 Monoclonal Antibody (WT1/857).