

12-8494: Anti-SARS-CoV Envelope (CT)

Clonality : Polyclonal

Application : ELISA

Description

Specificity: Rabbit Anti-Human Severe Acute Respiratory Syndrome E (SARS E) recognizes Human SARS E. This polyclonal antibody was purified using affinity chromatography.

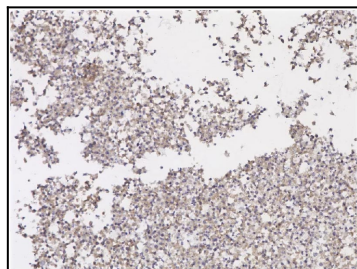
Background: A coronavirus, SARS (Severe Acute Respiratory Syndrome), was first identified 2002-2003. Coronaviruses are a major cause of upper respiratory diseases in humans. The genomes of these viruses are positive-stranded RNA approximately 27-31kb in length. SARS infection can be mediated by the binding of the viral spike protein, a glycosylated 139 kDa protein and the major surface antigen of the virus, to the angiotensin-converting enzyme 2 (ACE2) on target cells. This binding can be blocked by a soluble form of ACE2.

Product Info

Amount : 20 µg / 0.1 mg

Content : Concentration: 1.0 mg/ml
Formulation: This polyclonal antibody is formulated in phosphate buffered saline (PBS) pH 7.4 containing 0.02% sodium azide as a preservative.

Storage condition : This polyclonal antibody is stable for at least one week when stored at 2-8°C. For long term storage, aliquot in working volumes without diluting and store at -20°C in a manual defrost freezer. Avoid Repeated Freeze Thaw Cycles.



SARS-CoV-2 Spike RBD Antibody (clone 2165) IHC Data using infected cell pellets.

Figure 1

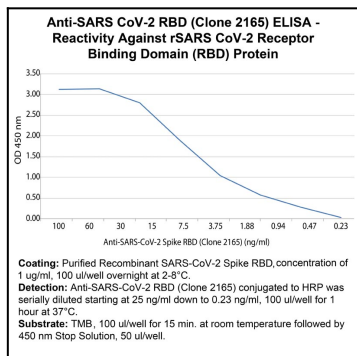


Figure 2