

30-2554-B: Anti-Human CD51/CD61 Antibody (Clone : 23C6) Biotin Conjugated

Clonality :	Monoclonal
Clone Name :	23C6
Application :	IP,IHC-Fr,FACS
Reactivity :	Human,chicken
Conjugate :	Biotin
Gene :	ITGAV/ITGB3
Gene ID :	3685/3690
Format :	Purified
Alternative Name :	VNRA, MSK8, ITGB3, ITGAV, Integrin alpha5beta3, OFA, VR
Isotype :	Mouse IgG1
Immunogen Information :	A cell suspension containing osteoclasts from osteoclastomas

Description

Specificity: The mouse monoclonal antibody 23C6 recognizes an extracellular epitope on CD51/CD61 complex, that is expressed mainly on human osteoclasts, but also e.g. on placenta, or melanoma cell lines. The epitope is native and sensitive to fixation. In chicken this antibody can be used to selectively identify the thrombocytes.

Description: CD51/CD61 (integrin alpha5beta3), also known as osteoclast functional antigen, serves as a vitronectin receptor, and binds also to fibronectin, fibrinogen, thrombospondin, osteopontin, collagen, and von Willebrand factor. Expression of this antigen increases with melanoma progression. In healthy individuals CD51/CD61 is expressed mainly on osteoclasts, placenta, and endothelial cells, at lower levels on platelets and macrophages.

Specificity : The mouse monoclonal antibody 23C6 recognizes an extracellular epitope on CD51/CD61 complex, that is expressed mainly on human osteoclasts, but also e.g. on placenta, or melanoma cell lines. The epitope is native and sensitive to fixation. In chicken this antibody can be used to selectively identify the thrombocytes.

Product Info

Amount :	0.1 mg
Purification :	Purified antibody is conjugated with biotin LC-NHS ester under optimum conditions and unconjugated antibody and free biotin are removed by size-exclusion chromatography.
Content :	1 mg/ml Formulation : Phosphate buffered saline (PBS), pH 7.4, 15 mM sodium azide
Storage condition :	Store at 2-8°C. Do not freeze.

Application Note

Flow cytometry: Recommended dilution: 1-5 µg/ml

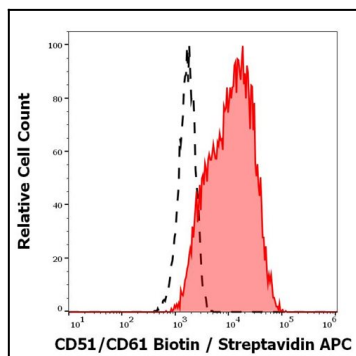


Figure 1: Separation of SK-MEL-30 cells stained using anti-human CD51/CD61 (23C6) biotin antibody (concentration in sample 1.67 $\mu\text{g/ml}$, Streptavidin APC, red-filled) from SK-MEL-30 cells unstained by primary antibody (Streptavidin APC, black-dashed) in flow cytometry analysis (surface staining).