

30-1353PE-Cy5: Anti-CD24 Monoclonal Antibody (Clone:SN3) PE-Cy™ 5 conjugated

Clonality :	Monoclonal
Clone Name :	SN3
Application :	FACS
Reactivity :	Human
Conjugate :	R-PE/CY5
Gene :	CD24
Gene ID :	100133941
Uniprot ID :	P25063
Alternative Name :	CD24,CD24A,HSA,nectadorin,SCLC4
Isotype :	Mouse IgG1 kappa
Immunogen Information :	Glycoproteins purified from human NALM-1 cell line.

Description

Specificity: The antibody SN3 reacts with CD24, a 35-45 kDa heavily glycosylated cell surface antigen. CD24 is expressed by granulocytes, B lymphocytes and by some activated T cells and T cell malignancies. It is not expressed on human thymocytes.

Description: CD24, also known as heat-stable antigen (HSA) or nectadorin, is a small mucin-like GPI-anchored extracellular membrane glycoprotein expressed on several cell types, including B cells. When B cells are activated and induced to further maturation, however, CD24 begins to disappear. CD24 seems to act as a gate-keeper for lipid rafts, thereby regulating the activity of integrins and other proteins such as the chemokine receptor CXCR4; it is also a ligand for P-selectin. CD24 triggering induces apoptosis of B cell precursors but not in mature resting B cells, where it instead inhibits their ability to proliferate in response to activation. CD24 expression is associated with invasiveness and poorer prognosis of carcinomas and is a marker of exosomes secreted into urine and amniotic fluid.

Product Info

Amount :	100 tests
Purification :	Purified antibody is conjugated with activated tandem dye of R-phycoerythrin-cyanine 5 (PE-Cy™ 5) under optimum conditions and unconjugated antibody and free fluorochrome are removed by size-exclusion chromatography.
Content :	Formulation: Stabilizing phosphate buffered saline (PBS), pH 7.4, 15 mM sodium azide
Storage condition :	Store at 2-8°C. Do not freeze.

Application Note

Flow cytometry: The reagent is designed for analysis of human blood cells using 4 µl reagent / 100 µl of whole blood or 10⁶ cells in a suspension. The content of a vial (0.4 ml) is sufficient for 100 tests.

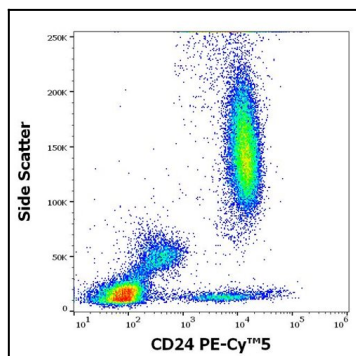


Figure 1: Flow cytometry surface staining pattern of human peripheral whole blood stained using anti-human CD24 (SN3) PE-Cy™5 antibody (concentration in sample 0.56 µg/ml).

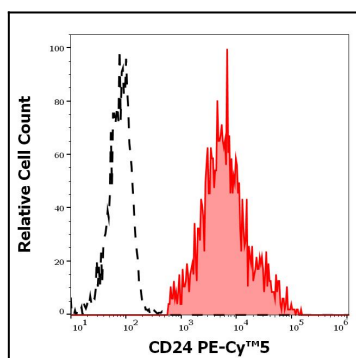


Figure 2: Separation of human CD24 positive lymphocytes (red-filled) from CD24 negative lymphocytes (black-dashed) in flow cytometry analysis (surface staining) of human peripheral whole blood stained using anti-human CD24 (SN3) PE-Cy™5 antibody (concentration in sample 0.56 µg/ml).