

### 30-2938: Anti-Human CD276 Monoclonal Antibody (Clone: 7-517)

<b>Clonality :</b>	Monoclonal
<b>Clone Name :</b>	7-517
<b>Application :</b>	IHC-Fr,ELISA,FACS
<b>Reactivity :</b>	Human
<b>Gene :</b>	CD276
<b>Gene ID :</b>	80381
<b>Uniprot ID :</b>	Q5ZPR3
<b>Format :</b>	Purified
<b>Alternative Name :</b>	B7H3, B7RP-2
<b>Isotype :</b>	Mouse IgG1 kappa
<b>Immunogen Information :</b>	monocyte-derived dendritic cells

#### Description

Specificity: The mouse monoclonal antibody 7-517 recognizes an extracellular epitope of human CD276 (B7H3) transmembrane glycoprotein.

Background: CD276 (B7H3) is a type I transmembrane glycoprotein expressed on dendritic cells, osteoblasts, sinonasal epithelium, and upon activation (by inflammatory cytokines) in monocytes, NK cells, T cells and B cells. Although it has been described also as a costimulatory ligand, its major role seems to be inhibitory. It regulates T cell proliferation and functions, and may provide certain tumors with protection against NK cells. CD276 can be used as a marker of neuroblastoma cells in the bone marrow, which is the primary site of neuroblastoma relapse.

CD276 (B7H3) is a type I transmembrane glycoprotein expressed on dendritic cells, osteoblasts, sinonasal epithelium, and upon activation (by inflammatory cytokines) in monocytes, NK cells, T cells and B cells. Although it has been described also as a costimulatory ligand, its major role seems to be inhibitory. It regulates T cell proliferation and functions, and may provide certain tumors with protection against NK cells. CD276 can be used as a marker of neuroblastoma cells in the bone marrow, which is the primary site of neuroblastoma relapse.

#### Product Info

<b>Amount :</b>	0.1 mg
<b>Purification :</b>	Purified by protein-A affinity chromatography.
<b>Content :</b>	Concentration: 1 mg/ml Formulation: Phosphate buffered saline (PBS), pH 7.4, 15 mM sodium azide
<b>Storage condition :</b>	Store at 2-8°C. Do not freeze.

## Application Note

Flow cytometry: Recommended dilution: 0.5-4 µg/ml.

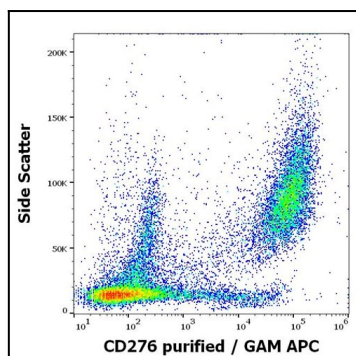


Figure 1: Flow cytometry surface staining pattern of human stimulated (GM-CSF + IL-4) monocytes stained using anti-human CD276 (7-517) purified antibody (concentration in sample 0.19 µg/ml) GAM APC.

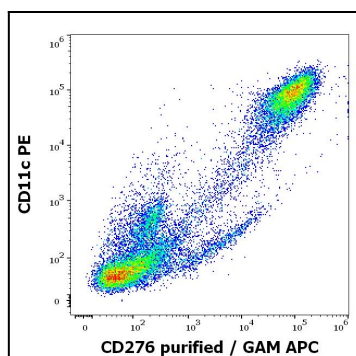


Figure 2: Flow cytometry multicolor surface staining pattern of human stimulated (GM-CSF + IL-4) monocytes stained using anti-human CD11c (BU15) PE antibody (10 µl reagent / 100 µl of peripheral whole blood) and anti-human CD276 (7-517) purified antibody (concentration in sample 0.19 µg/ml) GAM APC.

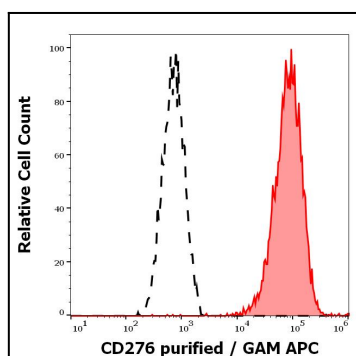


Figure 3: Separation of human CD11c positive cells stained using anti-human CD276 (7-517) purified antibody (concentration in sample 0.19 µg/ml, GAM APC, red-filled) from CD11c positive cells stained using mouse IgG1 isotype control (MOPC-21) purified antibody (concentration in sample 0.19 µg/ml, same as CD276 purified concentration, GAM APC, black-dashed) in flow cytometry analysis (surface staining) of human stimulated (GM-CSF + IL-4) monocytes.