

30-1486-AC: Anti-5-bromodeoxyuridine (BrdU) Monoclonal Antibody (Clone:Bu20a)-APC Conjugated

Clonality :	Monoclonal
Clone Name :	Bu20a
Application :	FACS
Conjugate :	APC
Gene ID :	35
Alternative Name :	5-bromodeoxyuridine
Isotype :	Mouse IgG1
Immunogen Information :	Bromodeoxyuridine conjugated to BSA

Description

Specificity: The antibody Bu20a reacts specifically with BrdU incorporated into DNA during S-phase of a cell cycle. It is useful for detecting proliferating cells by flow cytometry or immunohistochemistry staining. It cross-reacts with EdU.

Description: Bromodeoxyuridine (BrdU) is a thymidine analog which is selectively incorporated into the DNA of proliferating cells to provide a marker for the DNA being replicated. The number of proliferating cells can then be detected in cell lysates, tissue sections or suspensions using an antibody specific for the BrdU.

Product Info

Amount :	100 tests (T100)
Purification :	Purified antibody is conjugated with activated allophycocyanin (APC) under optimum conditions and unconjugated antibody and free fluorochrome are removed by size-exclusion chromatography.
Content :	Stabilizing phosphate buffered saline (PBS), pH 7.4, 15 mM sodium azide
Storage condition :	Store at 2-8°C. Protect from prolonged exposure to light. Do not freeze.

Application Note

Flow cytometry: The reagent is designed for analysis of human blood cells using 10 µl reagent / 100 µl of whole blood or 10⁶ cells in a suspension. The content of a vial (1 ml) is sufficient for 100 tests. Intracellular staining.

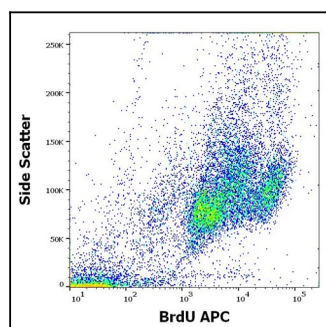


Figure 1: Flow cytometry intracellular staining pattern of K562 cells cultivated with BrdU stained using anti-BrdU (Bu20a) APC antibody (concentration in sample 8 µg/ml).

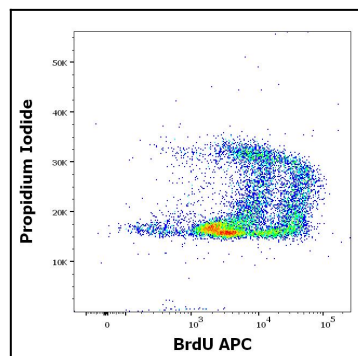


Figure 2: Flow cytometry multicolor intracellular staining pattern of K562 cells cultivated with BrdU stained using anti-BrdU (Bu20a) APC antibody (concentration in sample 8 µg/ml) and Propidium iodide.

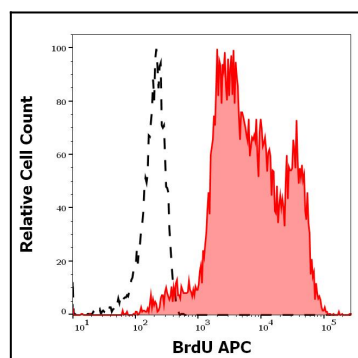


Figure 3: Separation of K562 cells cultivated with BrdU stained using anti-BrdU (Bu20a) APC antibody (concentration in sample 8 µg/ml, red-filled) from K562 cells cultivated with BrdU stained using mouse IgG1 isotype control (MOPC-21) APC antibody (concentration in sample 8 µg/ml, same as BrdU APC concentration, black-dashed) in flow cytometry analysis (intracellular staining).