

18-10001: Anti-TSH Rabbit Monoclonal Primary Antibody (Clone: EP254)

Clonality : Monoclonal
Clone Name : EP254
Application : IHC
Reactivity : Human
Gene : TSH
Format : Purified
Isotype : IgG

Description

Thyroid-stimulating hormone (also known as TSH or thyrotropin) is a peptide hormone synthesized and secreted by thyrotrope cells in the anterior pituitary gland which regulate the endocrine function of the thyroid gland. TSH is a glycoprotein and consists of two subunits, the alpha and the beta subunit, which are non-covalently bound to one another. The alpha subunit of TSH is also present in two other pituitary glycoprotein hormones: Follicle stimulating hormone and luteinizing hormone and, in primates, in the placental hormone chorionic gonadotropin. Each of these hormones also has a unique beta subunit, which provides receptor specificity. In other words, TSH is composed of alpha subunit bound to the TSH beta subunit, and TSH associates only with its own receptor. Free alpha and beta subunits have essentially no biological activity. Anti-TSH reacts with TSH-producing cells (thyrotrophs), and is a useful marker in classification of pituitary tumors and the differential identification of primary and metastatic tumors in the pituitary gland.

Product Info

Amount : 1.0 mL
Content : Solution in Tris Buffer, pH 7.3-7.7, with 1% BSA and <0.1% Sodium Azide.
Storage condition : Tightly closed. Recommended storage temperature 2 - 8 °C

Application Note

immunohistochemistry (formalin-fixed, paraffin-embedded sections): 1:100-1:500

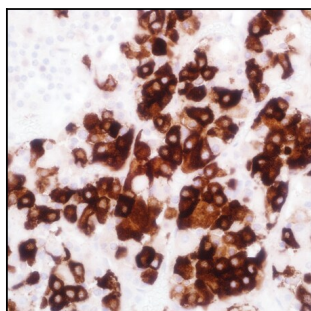


Figure 1: Immunohistochemistry TSH (EP254) on pituitary.