

18-10002: Anti-FSH Rabbit Monoclonal Primary Antibody (Clone: EP257)

Clonality : Monoclonal
Clone Name : EP257
Application : IHC
Reactivity : Human
Gene : FSH
Format : Purified
Isotype : IgG

Description

Follicle-stimulating hormone (FSH) is a member of the pituitary glycoprotein hormone family which includes luteinizing hormone, chorionic gonadotropin, and thyroid-stimulating hormone. Follicle-stimulating hormone enables ovarian folliculogenesis to the antral follicle stage and is essential for Sertoli cell proliferation and maintenance of sperm quality in the testis. Members of the pituitary glycoprotein hormone family consist of a shared alpha chain, and a beta chain encoded by a separate gene. The FSHB gene encodes the beta subunit of follicle stimulating hormone. Anti-FSH is a useful marker in classification of pituitary tumors and the study of pituitary disease, as it reacts with FSH-producing cells (gonadotrophs).

Product Info

Amount : 1.0 mL
Content : Solution in Tris Buffer, pH 7.3-7.7, with 1% BSA and <0.1% Sodium Azide.
Storage condition : 2-8°C

Application Note

immunohistochemistry (formalin-fixed, paraffin-embedded sections): 1:100-1:500

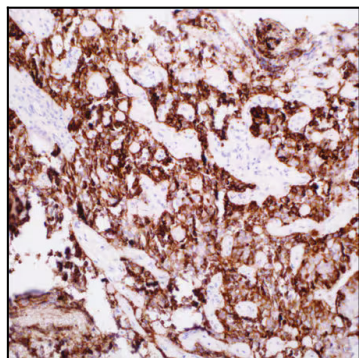


Figure 1: Immunohistochemistry FSH (EP257) on pituitary adenoma