

## 12-90023-PE: PE-conjugated Anti-CDH6(raludotatug biosimilar) mAb

**Reactivity :** Human  
**Gene :** CDH6  
**Uniprot ID :** P55285  
**Alternative Name :** CADH6;K-cadherin;DS-6000A,DS6000A  
**Isotype :** IgG1(K97R)

### Description

Research grade biosimilar. Not for use in therapeutic or diagnostic procedures for humans or animals.

### Product Info

**Amount :** 100 Test  
**Content :** Liquid PBS with 0.05% Proclin300, 1% BSA  
**Storage condition :** Store at 2°C-8°C for 6 months

### Application Note

Flow Cyt 1:350

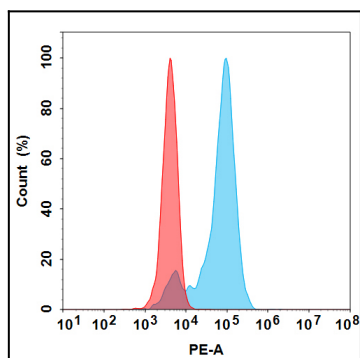


Figure 1. Flow cytometry analysis with 100  $\mu$ l/test (1:350) PE-conjugated Anti-CDH6(raludotatug biosimilar) mAb (Blue histogram) or isotype control mAb (Red histogram) on K562-CDH6 cells.