

36-1821: Monoclonal Antibody to Caldesmon, HMW (h-Caldesmon) (Smooth Muscle Marker)(Clone : SPM168)

Clonality :	Monoclonal
Clone Name :	SPM168
Application :	WB,FACS,IF,IHC
Reactivity :	Human
Gene :	CALD1
Gene ID :	800
Uniprot ID :	Q05682
Format :	Purified
Alternative Name :	CALD1,CAD,CDM
Isotype :	Mouse IgG1, kappa
Immunogen Information :	Crude human uterus extract

Description

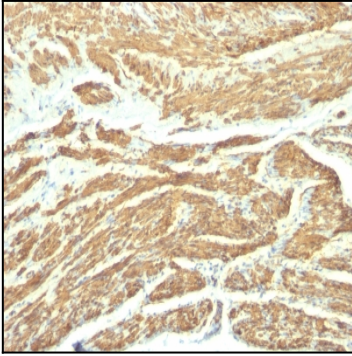
Recognizes a protein of 150kDa, which is identified as the high molecular weight variant of Caldesmon. Two closely related variants of human caldesmon have been identified which are different in their electrophoretic mobility and cellular distribution. The h-caldesmon variant (120-150kDa) is predominantly expressed in smooth muscle whereas l-caldesmon (70-80kDa) is found in non- muscle tissue and cells. Neither of the two variants has been detected in skeletal muscle. This MAb recognizes only the 150kDa variant (h-caldesmon) in Western blots of human aortic media extracts and is unreactive with fibroblast extracts from cultivated human foreskin. Caldesmon is a developmentally regulated protein involved in smooth muscle and non-muscle contraction.

Product Info

Amount :	100 µg
Purification :	Affinity Chromatography
Content :	100 µg in 500 µl PBS containing 0.05% BSA and 0.05% sodium azide. Sodium azide is highly toxic.
Storage condition :	Store the antibody at 4°C; stable for 6 months. For long-term storage; store at -20°C. Avoid repeated freeze and thaw cycles.

Application Note

Western Blot (2-4ug/ml); Flow Cytometry (1-2ug/million cells); Immunofluorescence (1-2ug/ml); Immunohistochemistry (Formalin-fixed) (1-2ug/ml for 30 minutes at RT)(Staining of formalin-fixed tissues requires heating tissue sections in 1mM EDTA, pH 7.5-8.5, for 45 min at 95°C followed by cooling at RT for 20 minutes)



Formalin-fixed, paraffin-embedded human Uterus stained with Caldesmon Monoclonal Antibody (SPM168).