

### 36-1827: Polyclonal Antibody to p40 (deltaNp63) (Squamous, Basal & Myoepithelial Cell Marker)

<b>Clonality :</b>	Polyclonal
<b>Application :</b>	WB,IHC
<b>Reactivity :</b>	Rat, Mouse, Human
<b>Gene :</b>	TP63
<b>Gene ID :</b>	8626
<b>Uniprot ID :</b>	Q9H3D4
<b>Format :</b>	Purified
<b>Alternative Name :</b>	TP63,KET,P63,P73H,P73L,TP73L
<b>Isotype :</b>	Rabbit IgG
<b>Immunogen Information :</b>	A synthetic peptide (ENNAQTQFSEPQY) corresponding to aa5-17 of human p40

#### Description

p40 (p63 delta) is a marker recently determined to be highly specific for squamous basal cells in the immunohistochemistry (IHC) application. The current more routinely recommended marker, p63, appears to have less specificity compared to p40, especially on squamous cell tumors. The ability to differentiate between lung adenocarcinoma vs. squamous cell carcinoma is difficult and has bearing on the different therapeutic avenues for each subtype treatment. p63 antibody's ability to distinguish between the tumor types appears to be inferior when compared to p40. The ability to utilize an antibody probe for p40 as a squamous cell marker bolsters its use for future sub-classification of lung cancers, especially by immunohistochemical techniques.

#### Product Info

<b>Amount :</b>	100 µg
<b>Purification :</b>	Affinity Chromatography
<b>Content :</b>	100 µg in 500 µl PBS containing 0.05% BSA and 0.05% sodium azide. Sodium azide is highly toxic.
<b>Storage condition :</b>	Store the antibody at 4°C; stable for 6 months. For long-term storage; store at -20°C. Avoid repeated freeze and thaw cycles.

#### Application Note

Western Blot (1-2ug/ml); Immunohistochemistry (Formalin-fixed) (1-2ug/ml for 30 minutes at RT)(Staining of formalin-fixed tissues requires heating tissue sections in 1mM EDTA, pH 9.0, for 45 min at 95&degC followed by cooling at RT for 20 minutes)

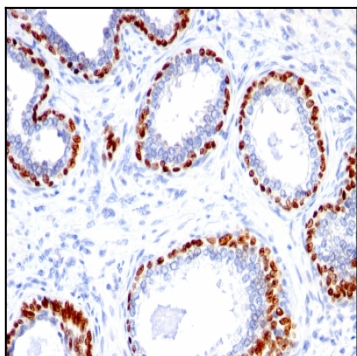


Figure-1: Formalin-fixed, paraffin-embedded Prostate Carcinoma stained with p40 Rabbit Polyclonal Antibody.

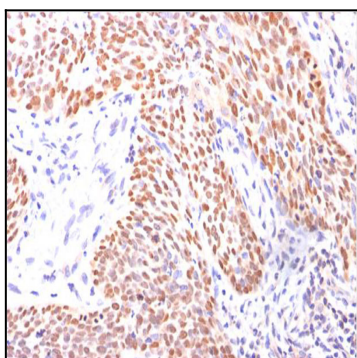


Figure-2: Formalin-fixed, paraffin-embedded Lung Squamous Cell Carcinoma stained with p40 Rabbit Polyclonal Antibody.

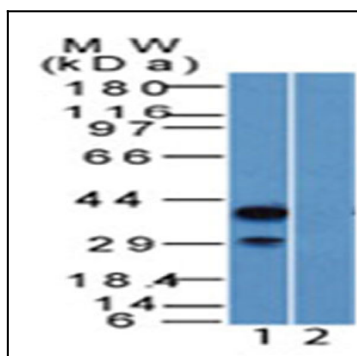


Figure-3: Western Blot of HEK293 Lysate (1) Absence and (2) Presence of immunizing peptide p40 Rabbit Polyclonal Antibody.