

## 32-18838: Recombinant human IGHE(106-427) Protein with C-terminal Flag and Twin-Strep Tag

**Conjugate :** Unconjugated  
**Gene :** IgHE  
**Uniprot ID :** P01854  
**Alternative Name :** IgE

### Description

Recombinant human IGHE(106-427) Protein with C-terminal Flag and Twin-Strep Tag

Molecular Character :IGHE(Ser106-Gly427) Flag and Twin-Strep Tag

Molecular Weight :The protein has a predicted molecular mass of 40.2 kDa after removal of the signal peptide. The apparent molecular mass of IGHE(106-427)-FLAG-Twin Strep is approximately 35-55 kDa due to glycosylation.

### Product Info

**Amount :** 10 ug / 50 ug  
**Purification :** The purity of the protein is greater than 95% as determined by SDS-PAGE and Coomassie blue staining.  
**Content :** Lyophilized from sterile PBS, pH 7.4. Normally 5 % - 8% trehalose is added as protectants before lyophilization. Please see Certificate of Analysis for specific instructions of reconstitution.  
**Storage condition :** Store at -20 deg C to -80 deg C for 12 months in lyophilized form. After reconstitution, if not intended for use within a month, aliquot and store at -80 deg C (Avoid repeated freezing and thawing). Lyophilized proteins are shipped at ambient temperature.

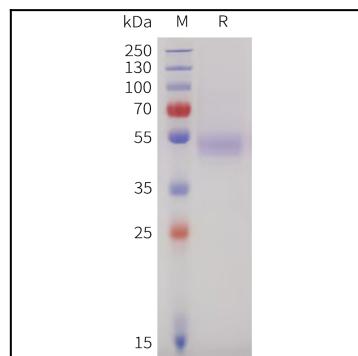


Figure 1. Human IGHE(106-427) Protein, Flag and Strep Tag on SDS-PAGE under reducing condition.