

### 36-1831: Monoclonal Antibody to BCL10 (MALT-Lymphoma Marker)(Clone : BL10/411)

<b>Clonality :</b>	Monoclonal
<b>Clone Name :</b>	BL10/411
<b>Application :</b>	FACS,WB,IHC
<b>Reactivity :</b>	Human
<b>Gene :</b>	BCL10
<b>Gene ID :</b>	8915
<b>Uniprot ID :</b>	O95999
<b>Format :</b>	Purified
<b>Alternative Name :</b>	BCL10,CIPER,CLAP
<b>Isotype :</b>	Mouse IgG1, kappa
<b>Immunogen Information :</b>	Human BCL10 recombinant protein (epitope aa122-168)

#### Description

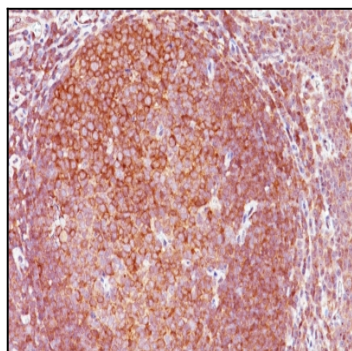
BCL10, with an N-terminal caspase recruitment domain (CARD), is found in a number of apoptotic regulatory molecules. It was identified through its direct involvement in t(1;14) of mucosa-associated lymphoid tissue (MALT) lymphoma. Expression of BCL10 was shown to induce NFkB activation in a NIK-dependent pathway. This MAb labels subpopulations of normal B and T cells and is a useful tool for the sub-classification of lymphomas. In MALT lymphomas with the t(1;14) translocation, while 55% of MALT lymphomas lacking this translocation exhibited the same labeling pattern, although at a much lower level.

#### Product Info

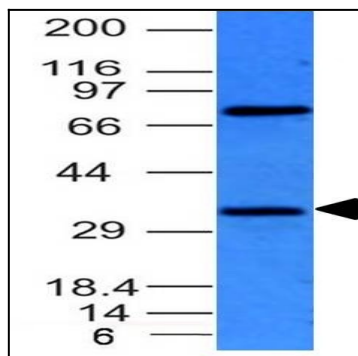
<b>Amount :</b>	100 µg
<b>Purification :</b>	Affinity Chromatography
<b>Content :</b>	100 µg in 500 µl PBS containing 0.05% BSA and 0.05% sodium azide. Sodium azide is highly toxic.
<b>Storage condition :</b>	Store the antibody at 4°C; stable for 6 months. For long-term storage; store at -20°C. Avoid repeated freeze and thaw cycles.

#### Application Note

Flow Cytometry (1-2ug/million cells); Western Blot (1-2ug/ml); Immunohistochemistry (Formalin-fixed) (1-2ug/ml for 30 minutes at RT) (Staining of formalin-fixed tissues requires heating tissue sections in 10mM Tris with 1mM EDTA, pH 9.0, for 45 min at 95&degC followed by cooling at RT for 20 minutes);



Formalin-fixed, paraffin-embedded human Tonsil stained with BCL10 Monoclonal Antibody (BL10/411).



Western Blot of HepG2 Cell Lysate using Bcl-10 Monoclonal Antibody (BL10/411)