

### 36-1834: Monoclonal Antibody to Cyclin B1 (G2- & M-phase Cyclin)(Clone : CCNB1/1098)

<b>Clonality :</b>	Monoclonal
<b>Clone Name :</b>	CCNB1/1098
<b>Application :</b>	IHC
<b>Reactivity :</b>	Human, Mouse
<b>Gene :</b>	CCNB1
<b>Gene ID :</b>	891
<b>Uniprot ID :</b>	P14635
<b>Format :</b>	Purified
<b>Alternative Name :</b>	CCNB1,CCNB
<b>Isotype :</b>	Mouse IgG1, kappa
<b>Immunogen Information :</b>	Recombinant human full-length CCNB1 protein

#### Description

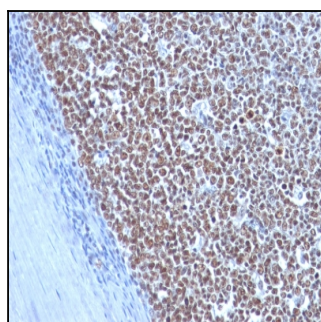
It recognizes a protein of 55-62kDa, identified as cyclin B1. In mammals, cyclin B associates with inactive p34cdc2, which facilitates phosphorylation of p34cdc2 at aa 14Thr and 15Tyr. This maintains the inactive state until the end of G2-phase. The inactive cyclin B-p34cdc2 complex continues to accumulate in the cytoplasm until the completion of DNA synthesis, when Cdc25, a specific protein phosphatase, dephosphorylates aa 14Thr and 15Tyr of p34cdc2 rendering the complex active at the G2/M boundary. This mitotic kinase complex remains active until the metaphase/anaphase transition when cyclin B is degraded. This degradation process is ubiquitin-dependent and is necessary for the cell to exit mitosis. So, cyclin B-p34cdc2 plays a critical role in G2 to M transition.

#### Product Info

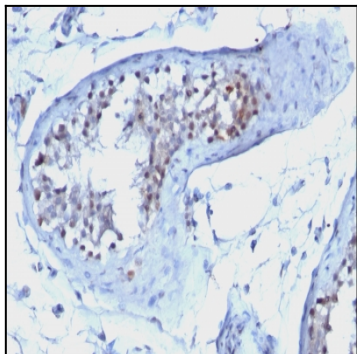
<b>Amount :</b>	100 µg
<b>Purification :</b>	Affinity Chromatography
<b>Content :</b>	100 µg in 500 µl PBS containing 0.05% BSA and 0.05% sodium azide. Sodium azide is highly toxic.
<b>Storage condition :</b>	Store the antibody at 4°C; stable for 6 months. For long-term storage; store at -20°C. Avoid repeated freeze and thaw cycles.

#### Application Note

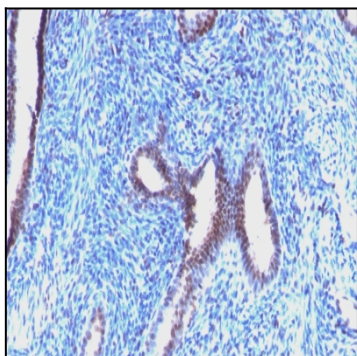
Immunohistochemistry (Formalin-fixed) (1-2ug/ml for 30 minutes at RT),(Staining of formalin-fixed tissues requires heating tissue sections in 10mM Tris with 1mM EDTA, pH 9.0, for 45 min at 95°C followed by cooling at RT for 20 minutes);



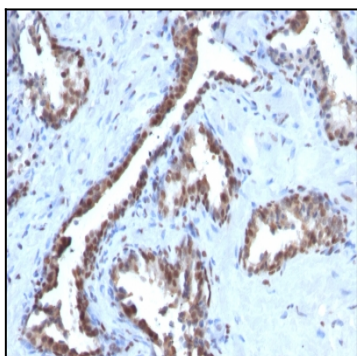
Formalin-fixed, paraffin-embedded human Tonsil stained with Cyclin B1 Monoclonal Antibody (CCNB1/1098)



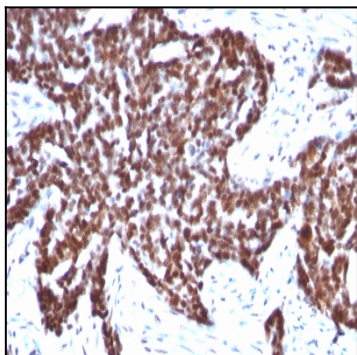
Formalin-fixed, paraffin-embedded human Testicular Carcinoma stained with Cyclin B1 Monoclonal Antibody (CCNB1/1098)



Formalin-fixed, paraffin-embedded human Endometrial Carcinoma stained with Cyclin B1 Monoclonal Antibody (CCNB1/1098)



Formalin-fixed, paraffin-embedded human Prostate Carcinoma stained with Cyclin B1 Monoclonal Antibody (CCNB1/1098)



Formalin-fixed, paraffin-embedded human Ovarian Carcinoma stained with Cyclin B1 Monoclonal Antibody (CCNB1/1098)