

36-1842: Monoclonal Antibody to CD1b (T-Cell Surface Glycoprotein)(Clone : RIV12)

Clonality :	Monoclonal
Clone Name :	RIV12
Application :	ELISA,FACS,IF
Reactivity :	Human
Gene :	CD1B
Gene ID :	910
Uniprot ID :	P29016
Format :	Purified
Alternative Name :	CD1B
Isotype :	Mouse IgG1, kappa
Immunogen Information :	Human peripheral lymphocytes

Description

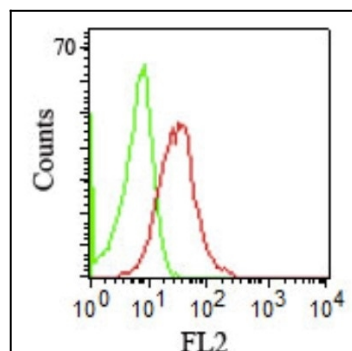
The mouse monoclonal antibody recognizes CD1b, a 44kDa type I glycoprotein associated with beta2-microglobulin. It is expressed on dendritic cells, Langerhans cells, thymocytes, and T acute lymphoblastic leukemia cells. The CD1 multigene family encodes five forms of the CD1 T-cell surface glycoprotein in human, designated CD1A, 1B, 1C, 1D and 1E. CD1, a type 1 membrane protein, has structural similarity to the MHC class I antigen and has been shown to present lipid antigens for recognition by T lymphocytes. Constitutive endocytosis of CD1B molecules and the differential sorting of MHC class II from lysosomes separate peptide- and lipid antigen-presenting molecules during dendritic cell maturation. CD1B is also expressed in interdigitating cells.

Product Info

Amount :	100 µg
Purification :	Affinity Chromatography
Content :	100 µg in 500 µl PBS containing 0.05% BSA and 0.05% sodium azide. Sodium azide is highly toxic.
Storage condition :	Store the antibody at 4°C; stable for 6 months. For long-term storage; store at -20°C. Avoid repeated freeze and thaw cycles.

Application Note

ELISA (For coating, order antibody without BSA); Flow Cytometry (1-2ug/million cells); Immunofluorescence (1-2ug/ml);



Flow Cytometry staining of human PBMC's using CD1b Monoclonal Antibody (RIV12).