

36-1863: Monoclonal Antibody to CD6(Clone : 3F7B5)

Clonality :	Monoclonal
Clone Name :	3F7B5
Application :	FACS,IF,IHC
Reactivity :	Human
Gene :	CD6
Gene ID :	923
Uniprot ID :	P30203
Format :	Purified
Alternative Name :	CD6
Isotype :	Mouse IgG1, kappa
Immunogen Information :	Human rheumatoid synovial T cell line ST-1

Description

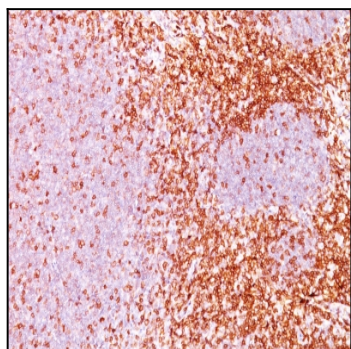
CD6 is a type I transmembrane glycoprotein that contains a 24-amino acid signal sequence, three extracellular scavenger receptor cysteine-rich (SRCR) domains, a membrane-spanning domain and a 44-amino acid cytoplasmic domain. The CD6 glycoprotein is tyrosine phosphorylated during TCR-mediated T cell activation. CD6 shows significant homology to CD5. CD6 is present on mature thymocytes, peripheral T cells and a subset of B cells. Antibodies to CD6 are used to deplete T cells from bone marrow transplants to prevent graft versus host disease.

Product Info

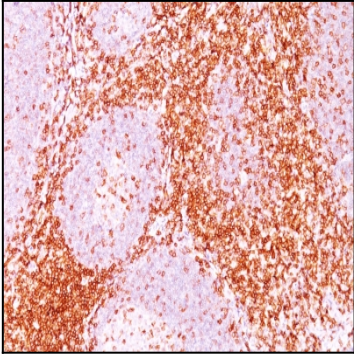
Amount :	100 µg
Purification :	Affinity Chromatography
Content :	100 µg in 500 µl PBS containing 0.05% BSA and 0.05% sodium azide. Sodium azide is highly toxic.
Storage condition :	Store the antibody at 4°C; stable for 6 months. For long-term storage; store at -20°C. Avoid repeated freeze and thaw cycles.

Application Note

Flow Cytometry (1-2ug/million cells); Immunofluorescence (1-2ug/ml); ,Immunohistochemistry (Formalin-fixed) (1-2ug/ml for 30 minutes at RT),(Staining of formalin-fixed tissues requires heating tissue sections in 10mM Tris with 1mM EDTA, pH 9.0, for 45 min at 95°C followed by cooling at RT for 20 minutes);



Formalin-fixed, paraffin-embedded human Tonsil stained with CD6 Monoclonal Antibody (3F7B5).



Formalin-fixed, paraffin-embedded human Tonsil stained with CD6 Monoclonal Antibody (3F7B5).