

36-1865: Monoclonal Antibody to CD6(Clone : SPM547)

| | |
|--------------------------------|-------------------------------|
| Clonality : | Monoclonal |
| Clone Name : | SPM547 |
| Application : | IF,IHC |
| Reactivity : | Human |
| Gene : | CD6 |
| Gene ID : | 923 |
| Uniprot ID : | P30203 |
| Format : | Purified |
| Alternative Name : | CD6 |
| Isotype : | Mouse IgG1, kappa |
| Immunogen Information : | Human recombinant CD6 protein |

Description

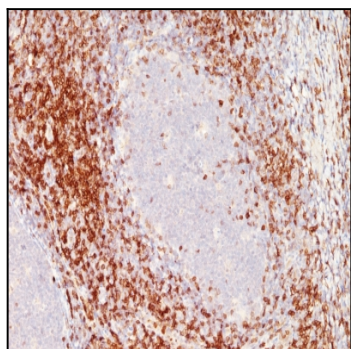
CD6 is a type I transmembrane glycoprotein that contains a 24-amino acid signal sequence, three extracellular scavenger receptor cysteine-rich (SRCR) domains, a membrane-spanning domain and a 44-amino acid cytoplasmic domain. The CD6 glycoprotein is tyrosine phosphorylated during TCR-mediated T cell activation. CD6 shows significant homology to CD5. CD6 is present on mature thymocytes, peripheral T cells and a subset of B cells. Antibodies to CD6 are used to deplete T cells from bone marrow transplants to prevent graft versus host disease.

Product Info

| | |
|----------------------------|---|
| Amount : | 100 µg |
| Purification : | Affinity Chromatography |
| Content : | 100 µg in 500 µl PBS containing 0.05% BSA and 0.05% sodium azide. Sodium azide is highly toxic. |
| Storage condition : | Store the antibody at 4°C; stable for 6 months. For long-term storage; store at -20°C. Avoid repeated freeze and thaw cycles. |

Application Note

Immunofluorescence (1-2ug/ml); Immunohistochemistry (Formalin-fixed) (1-2ug/ml for 30 minutes at RT),(Staining of formalin-fixed tissues requires heating tissue sections in 10mM Tris with 1mM EDTA, pH 9.0, for 45 min at 95°C followed by cooling at RT for 20 minutes);



Formalin-fixed, paraffin-embedded human Tonsil stained with CD6 Monoclonal Antibody (SPM547).