

### 36-1891: Monoclonal Antibody to CD20 / MS4A1 (B-Cell Marker)(Clone : SPM494)

<b>Clonality :</b>	Monoclonal
<b>Clone Name :</b>	SPM494
<b>Application :</b>	FACS,IF,IHC
<b>Reactivity :</b>	Human
<b>Gene :</b>	MS4A1
<b>Gene ID :</b>	931
<b>Uniprot ID :</b>	P11836
<b>Format :</b>	T.C. Sup.
<b>Alternative Name :</b>	MS4A1,CD20
<b>Isotype :</b>	Mouse IgG2a, kappa
<b>Immunogen Information :</b>	Human tonsil B cells

#### Description

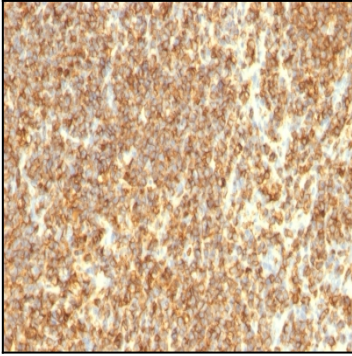
Recognizes a protein of 30-33kDa, which is identified as CD20. Its epitope is located in the cytoplasmic domain of CD20 and was, therefore, ascribed as CD20cy in the 5th Workshop. CD20 is a non-Ig differentiation antigen of B-cells and its expression is restricted to normal and neoplastic B-cells, being absent from all other leukocytes and tissues. CD20 is expressed by pre B-cells and persists during all stages of B-cell maturation but is lost upon terminal differentiation into plasma cells. This MAb can be used for immunophenotyping of leukemia and malignant cells, B lymphocyte detection in peripheral blood and B cell localization in tissues. It reacts with the majority of B-cells present in peripheral blood and lymphoid tissues and their derived lymphomas. In lymphoid tissue, germinal center blasts and B-immunoblasts are particularly reactive. It is a reliable antibody for ascribing a B-cell phenotype in known lymphoid tissues. Rarely, CD20-positive T-cell lymphomas have been reported. Reactivity has also been noted with Reed-Sternberg cells in cases of Hodgkin's disease, particularly of lymphocyte predominant type.

#### Product Info

<b>Amount :</b>	0.5 ml
<b>Content :</b>	Tissue culture supernatant with 0.05% Azide.
<b>Storage condition :</b>	Store the antibody at 4°C; stable for 6 months. For long-term storage; store at -20°C. Avoid repeated freeze and thaw cycles.

#### Application Note

Flow Cytometry (2-5ul/million cells); Immunofluorescence (1:100-1:200); ,Immunohistochemistry (Formalin-fixed) (1:100-1:200 for 30 minutes at RT) ,(Staining of formalin-fixed tissues requires heating tissue sections in 10mM Tris with 1mM EDTA, pH 9.0, for 45 min at 95&degC followed by cooling at RT for 20 minutes);



Formalin-fixed, paraffin-embedded human Lymphoma stained with CD20 Monoclonal Antibody (SPM494)