

11-13002: Polyclonal Antibody to Beta Tubulin

| | |
|--------------------------------|---|
| Clonality : | Polyclonal |
| Application : | WB |
| Reactivity : | Rat,Mouse,Human |
| Gene : | TUBB2A |
| Gene ID : | 7280 |
| Uniprot ID : | Q13885 |
| Format : | Purified |
| Alternative Name : | TUBB2A,TUBB2 |
| Isotype : | Rabbit IgG |
| Immunogen Information : | A partial length recombinant Tubulin, beta protein (amino acids 200-444) was used as the immunogen for this antibody. |

Description

Tubulin is one of several members of a small family of globular proteins and is the major constituent of microtubules. The most common members of the tubulin family are alpha-tubulin and beta-tubulin. It appears to play an important role in the formation of platelet. It is involved in the pathogenesis of Cortical dysplasia, complex, with other brain malformations 6 (CDCBM6) and distal hereditary motor neuropathy, type 2. Ubiquitously expressed with highest levels in spleen, thymus and immature brain. It is expressed exclusively in megakaryocytes and platelets in humans.

Product Info

| | |
|----------------------------|---|
| Amount : | 25 µg / 100 µg |
| Purification : | Protein A Chromatography |
| Content : | 25 µg in 50 µl/100 µg in 200 µl PBS containing 0.05% BSA and 0.05% sodium azide. Sodium azide is highly toxic. |
| Storage condition : | Store the antibody at 4°C, stable for 6 months. For long-term storage, store at -20°C. Avoid repeated freeze and thaw cycles. |

Application Note

Western blot analysis: 4-6 µg/ml

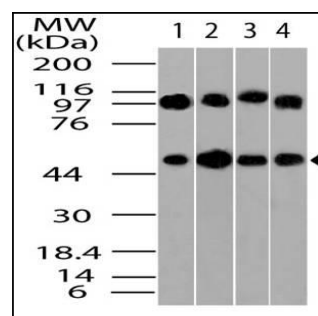


Figure-1: Western blot analysis of Beta Tubulin. Anti- Beta Tubulin antibody (11-13002) was used at 4 µg/ml on 1) A431, 2) HeLa, 3) MCF7 and 4) 3T3 lysates.

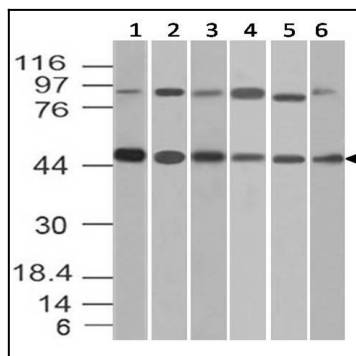


Figure-2: Western blot analysis of Beta Tubulin. Anti- Beta Tubulin antibody (11-13002) was used at 2 μ g/ml on 1) C2C12, 2) 293, 3) K562, 4) PC3, (5) A549 and (6) BV2 lysates.

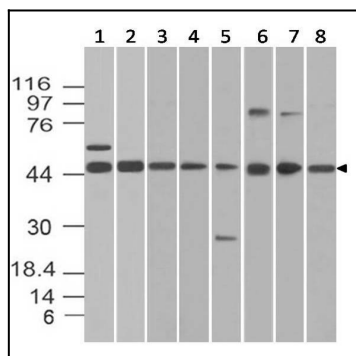


Figure-3: Western blot analysis of Beta Tubulin. Anti- Beta Tubulin antibody (11-13002) was used at 2 μ g/ml on 1) m Spleen , 2) m Lung, 3) m Liver, 4) m Colon, (5) r Liver, (6) r Testis, (7) r Kidney and (8) r Ovary lysates.