

## 11-8008: Polyclonal Antibody to C5L2/GPCR77

<b>Clonality :</b>	Polyclonal
<b>Application :</b>	WB
<b>Reactivity :</b>	Human
<b>Gene :</b>	C5AR2
<b>Gene ID :</b>	27202
<b>Uniprot ID :</b>	Q9P296
<b>Format :</b>	Purified
<b>Alternative Name :</b>	C5AR2,C5L2,GPR77
<b>Isotype :</b>	Rabbit IgG
<b>Immunogen Information :</b>	A partial length recombinant C5L2/GPCR77 protein (amino acids 1-240) was used as the immunogen for this antibody.

### Description

C5a anaphylatoxin chemotactic receptor 2 (C5L2) encodes a G-protein coupled receptor 1, also known as C5L2, G protein-coupled receptor 77. C5L2 involved in the complement system of the innate immune response. It has high affinity and several receptors not only for C5a, desarginated C5a, and C3a, but also for desarginated C3a, the acylation-stimulating protein. Diseases associated with C5AR2 include artery diseases and sepsis. C5L2 expressed mainly on frontal cortex, hippocampus, hypothalamus, pons and liver.

### Product Info

<b>Amount :</b>	25 µg / 100 µg
<b>Purification :</b>	Protein A Chromatography
<b>Content :</b>	25 µg in 50 µl/100 µg in 200 µl PBS containing 0.05% BSA and 0.05% sodium azide. Sodium azide is highly toxic.
<b>Storage condition :</b>	Store the antibody at 4°C, stable for 6 months. For long-term storage, store at -20°C. Avoid repeated freeze and thaw cycles.

### Application Note

Western blot analysis: 1-2 Åµg/ml

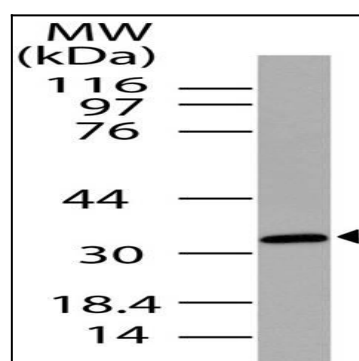


Fig-1: Western blot analysis of C5L2/GPCR77. Anti- C5L2/GPCR77 antibody (11-8008) was used at 1 µg/ml on Hela.