

**36-11019: Monoclonal Antibody to Bromodeoxyuridine (BrdU) (Proliferation Marker)(Clone : BRD469)**

<b>Clonality :</b>	Monoclonal
<b>Clone Name :</b>	BRD469
<b>Application :</b>	IHC
<b>Reactivity :</b>	All species
<b>Format :</b>	Purified
<b>Isotype :</b>	Mouse IgG1, kappa
<b>Immunogen Information :</b>	Bromodeoxyuridine (BrdU) conjugated to KLH

**Description**

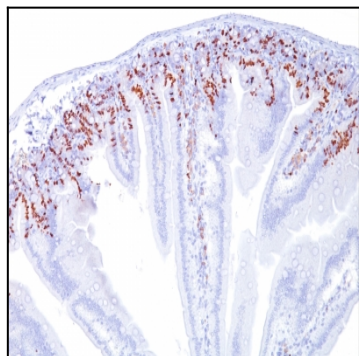
It reacts with Bromodeoxyuridine (BrdU) in single stranded DNA (produced by partial denaturation of double stranded DNA), BrdU coupled to a protein carrier, as well as free BrdU. BrdU is a thymidine analog, incorporated into cell nuclei during DNA synthesis prior to mitosis. Antibody to BrdU is helpful in detecting S-phase cells, providing useful information on the aggressiveness of tumors.

**Product Info**

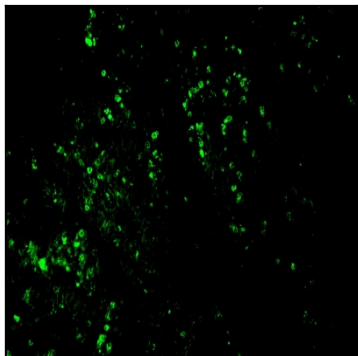
<b>Amount :</b>	100 µg
<b>Purification :</b>	Affinity Chromatography
<b>Content :</b>	100 µg in 500 µl PBS containing 0.05% BSA and 0.05% sodium azide. Sodium azide is highly toxic.
<b>Storage condition :</b>	Store the antibody at 4°C; stable for 6 months. For long-term storage; store at -20°C. Avoid repeated freeze and thaw cycles.

**Application Note**

Immunohistochemistry (Formalin-fixed) (1-2ug/ml for 30 minutes at RT) (Use Ab at 1ug/ml for 30 minute at RT)[For staining of formalin-fixed tissues, incubate sections in 4N HCl for 30 minutes at RT followed by digestion with trypsin at 1mg/ml PBS, 10 min at 37°C (Cat. #AP-9008)]



Formalin-fixed, paraffin-embedded Mouse Small Intestine stained with BrdU Monoclonal Antibody (BRD469).



Formalin-fixed, paraffin-embedded Rat Kidney stained with AF488 conjugate of BrdU Monoclonal Antibody (BRD469).