

36-11034: Monoclonal Antibody to Mitochondria (Marker for Human Cells, Granular RCC & Salivary Tumors)(Clone : 113-1)

| | |
|--------------------------------|---|
| Clonality : | Monoclonal |
| Clone Name : | 113-1 |
| Application : | IF, WB, IHC |
| Reactivity : | Human |
| Format : | Purified |
| Isotype : | Mouse IgG1, kappa |
| Immunogen Information : | Semi-purified mitochondrial preparation |

Description

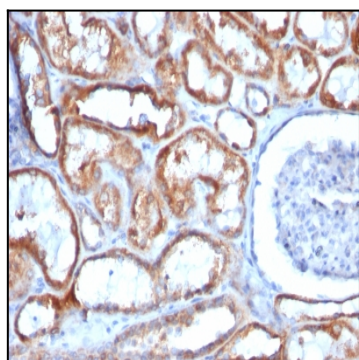
This MAb recognizes a 60kDa antigen associated with the mitochondria in human cells. It can be used to stain mitochondria in cell or tissue preparations and can be used as a mitochondrial marker in subcellular fractions. It produces a spaghetti-like pattern in normal and malignant cells. This antibody is an excellent marker for human cells in xenographic model research. It reacts specifically with human cells, including neurons and embryonic stem cells. Immunostaining pattern with anti-mitochondrial MAb has been reported as a useful discriminatory adjunct in the complex differential diagnosis of granular renal cell tumors. Reportedly, this MAb facilitates the classification of salivary tumors.

Product Info

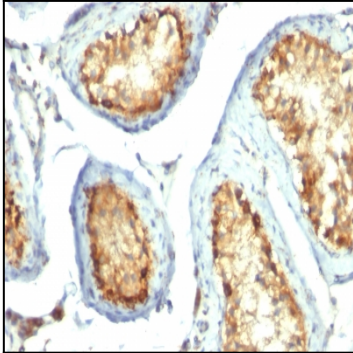
| | |
|----------------------------|---|
| Amount : | 100 µg |
| Purification : | Affinity Chromatography |
| Content : | 100 µg in 500 µl PBS containing 0.05% BSA and 0.05% sodium azide. Sodium azide is highly toxic. |
| Storage condition : | Store the antibody at 4°C; stable for 6 months. For long-term storage; store at -20°C. Avoid repeated freeze and thaw cycles. |

Application Note

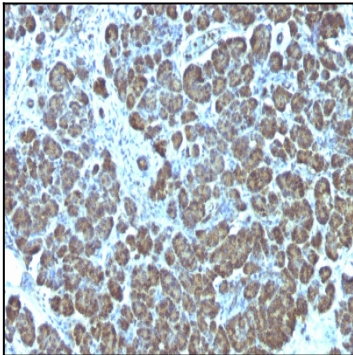
Immunofluorescence (1-2ug/ml); Western Blot (1-2ug/ml); Immunohistochemistry (Formalin-fixed) (1-2ug/ml for 30 minutes at RT), (Staining of formalin-fixed tissues is enhanced by heating tissue sections in 10mM Tris with 1mM EDTA, pH 9.0, for 45 min at 95°C followed by cooling at RT for 20 minutes),



Formalin-fixed, paraffin-embedded human Renal Cell Carcinoma stained with Mitochondria Monoclonal Antibody (113-1).



Formalin-fixed, paraffin-embedded human Testicular Carcinoma stained with Mitochondria Monoclonal Antibody (113-1).



Formalin-fixed, paraffin-embedded human Pancreas stained with Mitochondria Monoclonal Antibody (113-1).