

36-11047: Monoclonal Antibody to Biotin (Vitamin B7 or Vitamin H)(Clone : SPM375)

Clonality :	Monoclonal
Clone Name :	SPM375
Application :	Confocal Microscopy, FACS, IF, WB, IHC
Reactivity :	All species
Format :	Purified
Isotype :	Mouse IgG1, kappa
Immunogen Information :	Biotinylated sheep immunoglobulin

Description

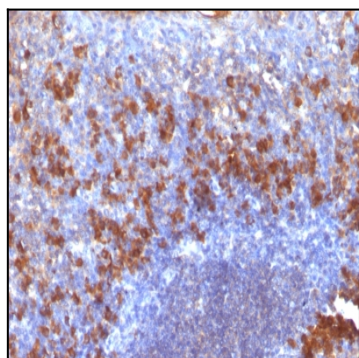
It recognizes both the free and protein-conjugated (either soluble or cell bound) form of biotin. This MAb is highly specific to biotin and shows no cross-reaction with other structurally related compounds. It has a very high affinity for biotin and is excellent for use in various amplification techniques. In some applications, localization of biotinylated probes with avidin produces unacceptably high background staining. Anti-biotin antibody may be substituted to decrease this noise.

Product Info

Amount :	100 µg
Purification :	Affinity Chromatography
Content :	100 µg in 500 µl PBS containing 0.05% BSA and 0.05% sodium azide. Sodium azide is highly toxic.
Storage condition :	Store the antibody at 4°C; stable for 6 months. For long-term storage; store at -20°C. Avoid repeated freeze and thaw cycles.

Application Note

Confocal Microscopy; Flow Cytometry (1-2ug/million cells); Immunofluorescence (1-2ug/ml); In situ Nucleic Acid Hybridization; Western Blot; Immunohistochemistry (Formalin-fixed) (1-2ug/ml for 30 minutes at RT) (No special pretreatment is required for the immunohistochemical staining of formalin-fixed, paraffin-embedded tissues.)



Formalin-fixed, paraffin-embedded human Tonsil stained with biotinylated Lambda Light Chain probe followed by anti-biotin Monoclonal Antibody (SPM375).