

36-11049: Monoclonal Antibody to Bromodeoxyuridine (BrdU)(Clone : SPM166)

| | |
|--------------------------------|--|
| Clonality : | Monoclonal |
| Clone Name : | SPM166 |
| Application : | FACS,IF,IHC |
| Reactivity : | All species |
| Format : | Purified |
| Isotype : | Mouse IgG1, kappa |
| Immunogen Information : | Bromodeoxyuridine (BrdU) conjugated to KLH |

Description

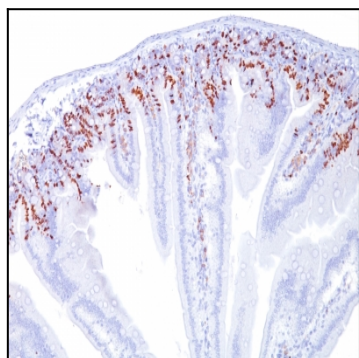
It reacts with Bromodeoxyuridine (BrdU) in single stranded DNA (produced by partial denaturation of double stranded DNA), BrdU coupled to a protein carrier, as well as free BrdU. BrdU is a thymidine analog, incorporated into cell nuclei during DNA synthesis prior to mitosis. Antibody to BrdU is helpful in detecting S-phase cells, providing useful information on the aggressiveness of tumors.

Product Info

| | |
|----------------------------|---|
| Amount : | 100 µg |
| Purification : | Affinity Chromatography |
| Content : | 100 µg in 500 µl PBS containing 0.05% BSA and 0.05% sodium azide. Sodium azide is highly toxic. |
| Storage condition : | Store the antibody at 4°C; stable for 6 months. For long-term storage; store at -20°C. Avoid repeated freeze and thaw cycles. |

Application Note

Flow Cytometry (1-2ug/million cells); Immunofluorescence (1-2ug/ml); Immunohistochemistry (Formalin-fixed) (1-2ug/ml for 30 minutes at RT) (Use Ab at 1ug/ml for 30 minute at RT)[For staining of formalin-fixed tissues, incubate sections in 4N HCl for 30 minutes at RT followed by digestion with trypsin at 1mg/ml PBS, 10 min at 37oC



Formalin-fixed, paraffin-embedded mouse Intestine stained with BrdU Monoclonal Antibody (SPM166).