

36-11074: Monoclonal Antibody to Mitochondria (Marker for Human Cells)(Clone : MTC02)

| | |
|--------------------------------|-----------------------------------------|
| Clonality : | Monoclonal |
| Clone Name : | MTC02 |
| Application : | IF,IHC |
| Reactivity : | Human |
| Format : | Purified |
| Isotype : | Mouse IgG1, kappa |
| Immunogen Information : | Semi-purified mitochondrial preparation |

Description

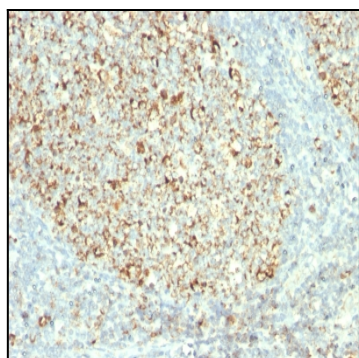
This MAb recognizes a 60kDa antigen associated with the mitochondria in human cells. It is a part of a new panel of reagents, which recognizes subcellular organelles or compartments of human cells. These markers may be useful in identification of these organelles in cells, tissues, and biochemical preparations. This MAb recognizes an antigen associated with the mitochondria in human cells only. It can be used to stain the mitochondria in cell or tissue preparations and can be used as a mitochondrial marker in subcellular fractions. It produces a spaghetti-like pattern in normal and malignant cells and may be used to stain mitochondria of cells in fixed or frozen tissue sections. It can also be used with paraformaldehyde fixed frozen tissue or cell preparations. This MAb is an excellent marker for human cells in xenographic model research. It reacts specifically with human cells, including neurons and embryonic stem cells.

Product Info

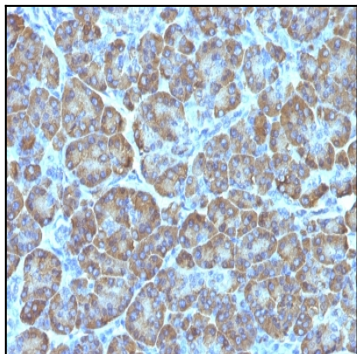
| | |
|----------------------------|-------------------------------------------------------------------------------------------------------------------------------|
| Amount : | 100 µg |
| Purification : | Affinity Chromatography |
| Content : | 100 µg in 500 µl PBS containing 0.05% BSA and 0.05% sodium azide. Sodium azide is highly toxic. |
| Storage condition : | Store the antibody at 4°C; stable for 6 months. For long-term storage; store at -20°C. Avoid repeated freeze and thaw cycles. |

Application Note

Immunofluorescence (1-2µg/ml); Immunohistochemistry (Formalin-fixed) (1-2µg/ml for 30 minutes at RT)(Staining of formalin-fixed tissues is enhanced by heating tissue sections in 1mM EDTA Buffer, pH 8.5-9.5, for 45 min at 95°C followed by cooling at RT for 20 minutes)



Formalin-fixed, paraffin-embedded human Tonsil stained with Mitochondria Monoclonal Antibody (MTC02).



Formalin-fixed, paraffin-embedded human Pancreas stained with Mitochondria Monoclonal Antibody (MTC02).