

36-11085: Monoclonal Antibody to Cytokeratin, pan (Epithelial Marker)(SPM115 + SPM116)-PE

Clonality :	Monoclonal
Clone Name :	SPM115 + SPM116
Application :	FACS,IF
Reactivity :	Human, Mouse, Rat
Conjugate :	PE
Gene :	KRT77
Gene ID :	374454
Uniprot ID :	Q7Z794
Format :	Purified
Alternative Name :	KRT77,KRT1B
Isotype :	Mouse IgG1, kappa
Immunogen Information :	Human epidermal keRatin

Description

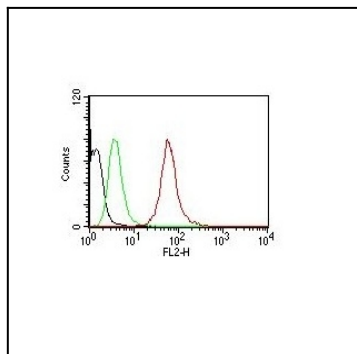
Twenty human keratins are resolved with two-dimensional gel electrophoresis into acidic (pI 6.0) subfamilies. This antibody cocktail recognizes acidic (Type I or LMW) and basic (Type II or HMW) cytokeratins, which include CK1, CK3, CK4, CK5, CK6, CK8, CK10, CK14, CK15, CK16, and CK19. Many studies have shown the usefulness of keratins as markers in cancer research and tumor diagnosis. This MAb is a broad spectrum anti pan-cytokeratin antibody cocktail, which differentiates epithelial tumors from non-epithelial tumors e.g. squamous vs. adenocarcinoma of the lung, liver carcinoma, breast cancer, and esophageal cancer. It has been used to characterize the source of various neoplasms and to study the distribution of cytokeratin containing cells in epithelia during normal development and during the development of epithelial neoplasms. This antibody stains cytokeratins present in normal and abnormal human tissues and has shown high sensitivity in the recognition of epithelial cells and carcinomas.

Product Info

Amount :	100 µg
Purification :	Affinity Chromatography
Content :	100 µg in 500 µl PBS containing 0.05% BSA and 0.05% sodium azide. Sodium azide is highly toxic.
Storage condition :	Store the antibody at 4°C; stable for 6 months. For long-term storage; store at -20°C. Avoid repeated freeze and thaw cycles.

Application Note

Flow Cytometry (5ul per test per one million cells or 5ul per 100ul of whole blood);Immunofluorescence (1:50-1:100 for 30 minutes at RT);



Flow Cytometry of human Pan-Cytokeratins on HeLa Cells. Black: Cells alone; Green: Isotype Control; Red: PE-labeled Pan-Cytokeratin Monoclonal Antibody (SPM115 + SPM116).