

36-11114: Monoclonal Antibody to Cytokeratin 8/18(C-43 + DC10)

Clonality :	Monoclonal
Clone Name :	C-43 + DC10
Application :	IHC
Reactivity :	Human
Gene :	KRT8
Gene ID :	3856
Uniprot ID :	P05787
Format :	Purified
Alternative Name :	KRT8,CYK8
Isotype :	Mouse IgG1, kappa + Mouse IgG1, kappa
Immunogen Information :	KeRatin prepaRation from a human carcinoma (C-43); PMC-42 human breast carcinoma cells (DC10)

Description

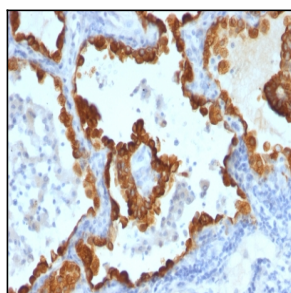
Cytokeratin 8 (CK8) belongs to the type II (or B or basic) subfamily of high molecular weight cytokeratins and exists in combination with cytokeratin 18 (CK18). This MAb cocktail recognizes all simple epithelia including glandular epithelium, for example thyroid, female breast, gastrointestinal tract, respiratory tract, and urogenital tract including transitional epithelium. All adenocarcinomas and most squamous carcinomas are positive but keratinizing squamous carcinomas are usually negative. This antibody is useful in demonstrating the presence of Paget cells; there is very little keratin 18 in the normal epidermis so only Paget cells are stained. Immunohistochemical staining with this MAb is indistinguishable from that obtained with monoclonal antibody 5D3.

Product Info

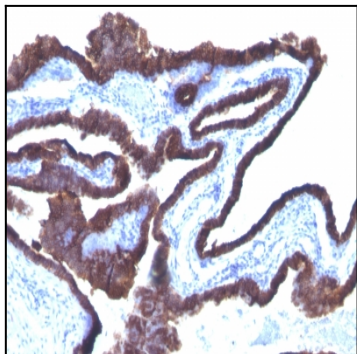
Amount :	100 µg
Purification :	Affinity Chromatography
Content :	100 µg in 500 µl PBS containing 0.05% BSA and 0.05% sodium azide. Sodium azide is highly toxic.
Storage condition :	Store the antibody at 4°C; stable for 6 months. For long-term storage; store at -20°C. Avoid repeated freeze and thaw cycles.

Application Note

Immunohistochemistry (Formalin-fixed) (1-2ug/ml for 30 min at RT)(Staining of formalin-fixed tissues requires heating tissue sections in 10mM Tris with 1mM EDTA, pH 9.0, for 45 min at 95°C followed by cooling at RT for 20 minutes);



Formalin-fixed, paraffin-embedded human Lung Carcinoma stained with Cytokeratin 8/18 Monoclonal Antibody (C-43 + DC10).



Formalin-fixed, paraffin-embedded human Ovarian Cancer stained with Cytokeratin 8/18 Monoclonal Antibody (C-43 + DC10).