

36-11118: Monoclonal Antibody to Ep-CAM / CD326 (Rat) (Epithelial Marker)(Clone : Epcam/1158)

Clonality :	Monoclonal
Clone Name :	Epcam/1158
Application :	IHC
Reactivity :	Rat, Mouse
Gene :	Epcam
Gene ID :	171577
Uniprot ID :	O55159
Format :	Bioreactor Concentrate
Alternative Name :	Epcam,Tacstd1
Isotype :	Mouse IgG1, kappa
Immunogen Information :	Recombinant full-length Rat Epcam protein

Description

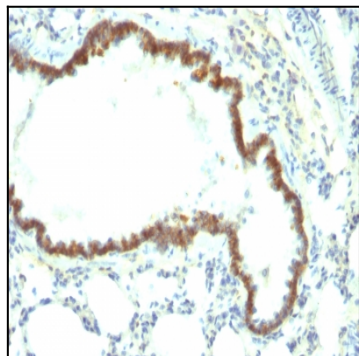
Epitopes of Epcam/1158 and Epcam/1159 monoclonal antibodies are different. EGP40 is a 40-43kDa transmembrane epithelial glycoprotein, also identified as epithelial specific antigen (ESA), or epithelial cellular adhesion molecule (Ep-CAM). It is expressed on baso-lateral cell surface in most simple epithelia and a vast majority of carcinomas.

Product Info

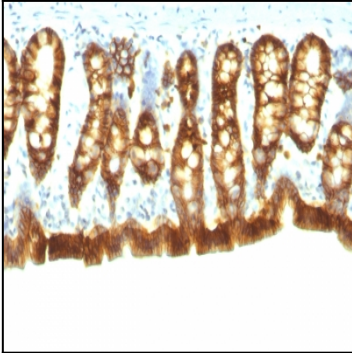
Amount :	0.5 ml
Content :	Bioreactor Concentrate with 0.05% Azide
Storage condition :	Store the antibody at 4°C; stable for 6 months. For long-term storage; store at -20°C. Avoid repeated freeze and thaw cycles.

Application Note

Immunohistochemistry (Formalin-fixed) (1:50-1:100; 30 min at RT)(Staining of formalin-fixed tissues requires heating tissue sections in 10mM Tris with 1mM EDTA, pH 9.0, for 45 min at 95°C followed by cooling at RT for 20 minutes);



Formalin-fixed, paraffin-embedded Rat Lung stained with Ep-CAM Monoclonal Antibody (Epcam/1158).



Formalin-fixed, paraffin-embedded Rat Colon stained with Ep-CAM Monoclonal Antibody (Epcam/1158).