

36-3009: Monoclonal Antibody to CD43 (Clone: DF-T1)

| | |
|--------------------------------|--|
| Clonality : | Monoclonal |
| Clone Name : | DF-T1 |
| Application : | FACS, IF, WB, IHC-P |
| Reactivity : | Human |
| Gene : | SPN |
| Gene ID : | 105369261 |
| Uniprot ID : | P16150 |
| Format : | Purified |
| Alternative Name : | SPN,CD43 |
| Isotype : | Mouse IgG1, kappa |
| Immunogen Information : | Myeloblastic KG1 cells were used as the immunogen for this antibody. |

Description

This antibody recognizes a 95/115/135kDa (depending upon the extent of glycosylation) surface transmembrane glycoprotein, identified as CD43 (leukosialin, sialophorin, or leukocyte sialoglycoprotein). CD43 is expressed on all thymocytes and T-lymphocytes. Defects in the CD43 molecule are associated with the development of Wiskott-Aldrich syndrome. CD43 is also found in a range of lymphoid and myeloid tumors. Expression of CD43 may be used to identify B-lymphoblastic lymphoma, since the malignant cells in this condition are often CD43 positive. Since CD43 antibody stains granulocytes and their precursors, this antibody may be used as a marker for myeloid tumors. This antibody is also useful in identification and classification of T-cell malignancies.

Product Info

| | |
|----------------------------|---|
| Amount : | 100 µg |
| Purification : | Protein G Chromatography |
| Content : | 25 µg in 50 µl/100 µg in 200 µl PBS containing 0.05% BSA and 0.05% sodium azide. Sodium azide is highly toxic. |
| Storage condition : | Store the antibody at 4°C; stable for 6 months. For long-term storage; store at -20°C. Avoid repeated freeze and thaw cycles. |

Application Note

"Flow Cytometry (1-2ug/million cells), Immunofluorescence (1-2ug/ml), Western Blot (1-2ug/ml)

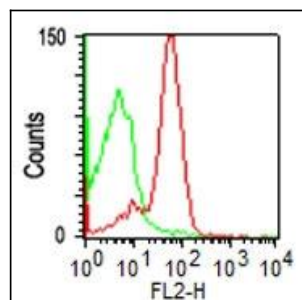


Fig.1: Cell Surface flow analysis of anti-hCD43 antibody (36-3009) in PBMC (Lymphocytes gated) using 0.5 µg/10⁶ cells. Green represents isotype control (ABEOMICS); red represents anti-hCD43 antibody. Goat anti-mouse PE conjugated secondary antibody was used (ABEOMICS).

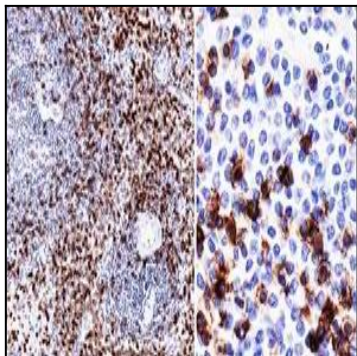


Fig. 2: Immunohistochemical analysis of CD43 in human spleen using CD43 antibody (Clone: DF-T1) at 1:200 dilution.

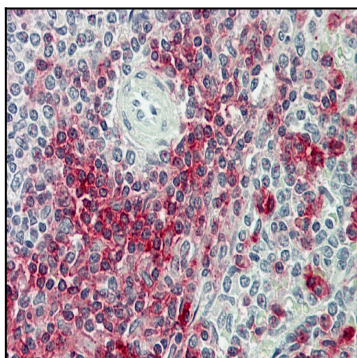


Fig. 3: Immunohistochemical analysis of CD43 in human spleen tissue using CD43 antibody (Clone: DF-T1) at 10 µg/ml.



Figure-4: Western blot analysis of Anti-CD43 antibody in human spleen tissue using 1 µg/ml of Anti-CD43 (DF-T1).