

10-7526: Monoclonal Antibody to p21 (Clone: WA-1)

Clonality :	Monoclonal
Clone Name :	WA-1
Application :	IHC,WB
Reactivity :	Human
Gene :	CDKN1A
Gene ID :	1026
Uniprot ID :	P38936
Format :	Purified
Alternative Name :	CDKN1A,CAP20,CDKN1,CIP1,MDA6,PIC1,SDI1,WAF1
Isotype :	Mouse IgG1 Kappa
Immunogen Information :	Recombinant human p21 protein was used as immunogen to generate the antibody.

Description

p21, a member of the cycle dependent kinase (CDK) inhibitor family, was first identified as a tumor suppressor or anti-oncogenic protein and negative regulator of the cell cycle.

Product Info

Amount :	25 µg / 100 µg
Purification :	Protein G Chromatography
Content :	25 µg in 50 µl/100 µg in 200 µl PBS containing 0.05% BSA and 0.05% sodium azide. Sodium azide is highly toxic.
Storage condition :	Store the antibody at 4°C; stable for 6 months. For long-term storage; store at -20°C. Avoid repeated freeze and thaw cycles.

Application Note

Immunohistochemical analysis: 1:50-1:100, Western blot analysis: 2-4 µg/ml

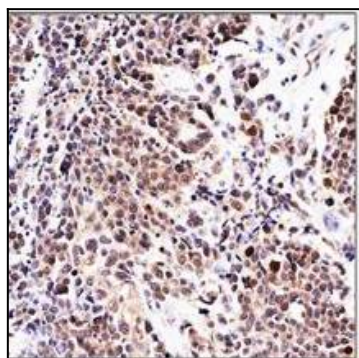


Figure-1: Immunohistochemical analysis of p21 in human urinary transitional cell carcinoma using p21 antibody (Clone: WA-1) at 1: 50 dilution.

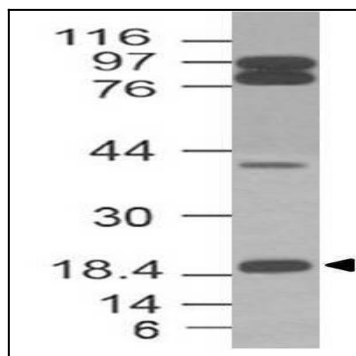


Figure-2: Western blot analysis of p21. Anti-p21 antibody (Clone: WA-1) was used at 2 μ g/ml in HCT-116 lysate.