

## 10-105-F: Rat IgG1 Isotype Control (Clone: HRPN)- FITC

<b>Clonality :</b>	Monoclonal
<b>Clone Name :</b>	HRPN
<b>Application :</b>	IHC,FACS
<b>Conjugate :</b>	FITC
<b>Format :</b>	Purified
<b>Isotype :</b>	Rat IgG1
<b>Immunogen Information :</b>	Horseradish Peroxidase was used as the immunogen for this Isotype control.

### Description

A Rat isotype control is an antibody of the same class (isotype) of immunoglobulin as the specific Rat antibody, but is either myeloma-derived antibody of unknown specificity, or is raised against an antigen that is presumed not to be present on or in the cells under study. Isotype control antibodies are used for the estimation of non-specific binding of target primary antibodies to cell surface antigens.

### Product Info

<b>Amount :</b>	100 µg
<b>Purification :</b>	Affinity Chromatography
<b>Content :</b>	0.2 mg/ml in Tris buffer containing 0.05% Azide
<b>Storage condition :</b>	Store the antibody at 4°C; stable for 6 months.

### Application Note

FACS: 0.5-2 µg/10<sup>6</sup> cells

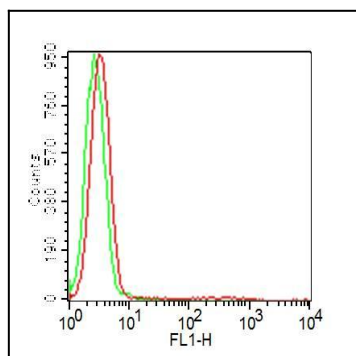


Fig: 1 Cell surface flow analysis of FITC-conjugated Rat IgG1 isotype control in Ramos cell line using 0.5 µg/10<sup>6</sup> cells (Clone: HRPN). Green represents cell only; red represents Rat IgG1 isotype control conjugated with FITC.