

## 10-3026-F: Monoclonal Antibody to TLR2 (Clone: ABM3A87) FITC conjugated

<b>Clonality :</b>	Monoclonal
<b>Clone Name :</b>	ABM3A87
<b>Application :</b>	FACS
<b>Reactivity :</b>	Mouse,Human
<b>Conjugate :</b>	FITC
<b>Gene :</b>	TLR2
<b>Gene ID :</b>	7097
<b>Uniprot ID :</b>	O60603
<b>Format :</b>	Purified
<b>Alternative Name :</b>	TLR2,TIL4
<b>Isotype :</b>	Mouse IgG1 Kappa
<b>Immunogen Information :</b>	A partial length recombinant TLR2 protein (amino acids 180-420) was used as the immunogen for this antibody.

### Description

TLR2 (Toll-Like Receptors 2) is a member of the TLR (Toll-like receptor) family that plays a fundamental role in pathogen recognition and activation of innate immunity. TLR2 forms heterodimers with TLR1 and TLR6, which is the initial step in a cascade of events leading to significant innate immune responses, development of adaptive immunity to pathogens and protection from immune sequelae related to infection with these pathogens. TLR2 also interacts with a large number of non-TLR molecules, allowing for recognition of a great number and variety of PAMPs (pathogen-associated molecular patterns). TLR2 expression has been detected in immune cells, endothelial, and epithelial cells.

### Product Info

<b>Amount :</b>	25 µg / 100 µg
<b>Purification :</b>	Protein G Chromatography
<b>Content :</b>	0.2 mg/ml in Tris buffer containing 0.05% Azide
<b>Storage condition :</b>	Store the antibody at 4°C, stable for 6 months.

### Application Note

FACS analysis: 0.5 -1 µg/10<sup>6</sup> cells

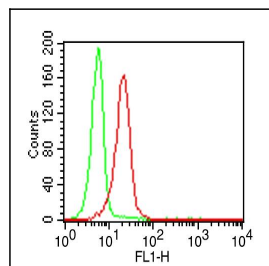


Fig-1: Intracellular flow analysis of TLR2 FITC conjugated in PBMC (Lymphocytes) using 0.5 µg/10<sup>6</sup> cells of TLR2 FITC conjugated antibody (Clone: ABM3A87). Green represents isotype control; red represents anti-TLR2 FITC conjugated antibody.

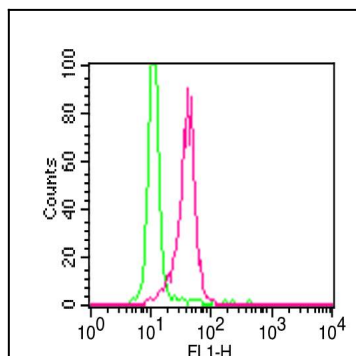


Fig-2: Intracellular flow analysis of TLR2 FITC conjugated in PBMC (Monocytes) using 0.5  $\mu\text{g}/10^6$  cells of TLR2 FITC conjugated antibody (Clone: ABM3A87). Green represents isotype control; red represents anti-TLR2 FITC conjugated antibody.