

**10-3029-P: Monoclonal Antibody to Mouse TLR9 (Clone: ABM4D70) PE conjugated**

<b>Clonality :</b>	Monoclonal
<b>Clone Name :</b>	ABM4D70
<b>Application :</b>	FACS
<b>Reactivity :</b>	Mouse
<b>Conjugate :</b>	PE
<b>Gene :</b>	Tlr9
<b>Gene ID :</b>	81897
<b>Uniprot ID :</b>	Q9EQU3
<b>Format :</b>	Purified
<b>Alternative Name :</b>	Tlr9
<b>Isotype :</b>	Rat IgG2a Kappa
<b>Immunogen Information :</b>	A partial length recombinant mTLR9 protein (amino acids 602-860) was used as the immunogen for this antibody.

**Description**

Mouse Toll-like receptor 9 (mTLR9) is an innate immune sensor for microbial DNA that erroneously responds to self DNA in autoimmune disease. TLR9 is normally expressed in endosomes/lysosomes where it is activated by pathogen-derived DNA. It has modulatory effect on the mucosal immune system, influence susceptibility to allergic sensitization to foods (22718261). TLR9 recognizes unmethylated CpG-containing DNA commonly found in bacteria. TLR9 signaling plays an important role in the development of robust protective immunity, proper recruitment and function of effector cells (lymphocytes and macrophages), and, ultimately, effective cryptococcal clearance from the infected lungs (20581055). It is involved in the pathogenesis of cardiovascular diseases, such as hypertension and heart failure.

**Product Info**

<b>Amount :</b>	25 Test / 100 Test
<b>Purification :</b>	Protein G Chromatography
<b>Content :</b>	0.04 mg/ml in PBS with 0.05% Azide.
<b>Storage condition :</b>	Store the antibody at 4°C; stable for 6 months.

**Application Note**

FACS: 0.25-1  $\mu$ g/ $10^6$  cells

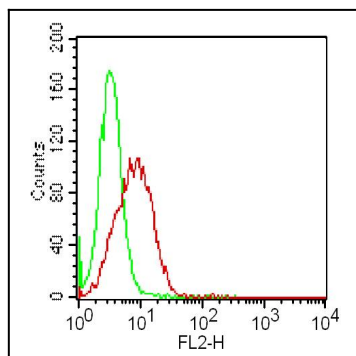


Fig-1: Intracellular flow analysis of PE conjugated mTLR9 antibody in mouse splenocytes using 0.5  $\mu\text{g}/10^6$  cells of PE conjugated mTLR9 antibody (Clone: ABM4D70). Green represents isotype control; red represents anti-mTLR9 antibody conjugated with PE.