

11-3008: Polyclonal Antibody to NALP2

Clonality :	Polyclonal
Application :	WB
Reactivity :	Human
Gene :	NLRP2
Gene ID :	55655
Uniprot ID :	Q9NX02
Format :	Purified
Alternative Name :	NACHT, LRR and PYD domains-containing protein 2, Nucleotide-binding site protein 1, PYRIN domain and NACHT domain-containing protein 1, PYRIN-containing APAF1-like protein 2
Isotype :	Rabbit IgG
Immunogen Information :	A partial recombinant NALP2 protein (amino acids 844-1060) was used as the immunogen for this antibody.

Description

NALP2 (also known as PAN1/PYPAF2) is a member of the NLR (NACHT-LRR) family which includes both NODs and NALPs. Alternative names for the NLR family include CATERPILLER, NOD and NOD-LRR. NLR family members are thought to be intracellular pathogen-recognition receptors (PRRs). At least fourteen NALPs have been identified in the human genome, and a common feature among NALPs 1-3, 6, and 12 is their ability to recruit the adaptor protein ASC through a homotypic PYD-PYD interaction, which in turn recruits caspase-1 through a CARD-CARD interaction. The oligomerization of NALPs is thought to bring the inflammatory caspases into close proximity leading to their activation within the inflammasome. The NALP2/3 inflammasomes contain, in addition to NALP2 or NALP3, the caspase recruitment domain (CARD)-containing protein CARDINAL, ASC and caspase 1. Processing of the pro-inflammatory cytokines IL-1 β and IL-18 by caspases leads to the secretion of active cytokines and elicits a potent inflammatory response. The expression of NALP2 is upregulated in THP-1 macrophage cells by LPS and certain cytokines including interferon γ and β , supporting a role for NALP2 in host-defense and inflammation. Additionally, NALP2 is expressed in several human tumor cell lines. However, the endogenous expression of NALP2 varies widely among tumor cell lines, with the highest levels found in MCF-7 and MDA-MB-435 breast cancer, Caco2 colon cancer and UACC62 melanoma cells. This antibody recognizes NALP2; human NALP2 is a 1062 amino acid protein, it is specific for NALP2 does not cross-react with related family members PAN2 or NAC.

Product Info

Amount :	25 μ g / 100 μ g
Purification :	Protein A Chromatography
Content :	25 μ g in 50 μ l/100 μ g in 200 μ l PBS containing 0.05% BSA and 0.05% sodium azide. Sodium azide is highly toxic.
Storage condition :	Store the antibody at 4°C, stable for 6 months. For long-term storage, store at -20°C. Avoid repeated freeze and thaw cycles.

Application Note

Western blot analysis: 0.5-1 μ g/ml

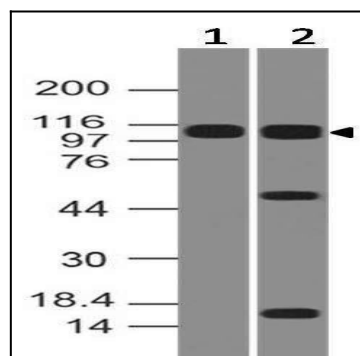


Figure-1: Expression analysis of NALP2. Anti-NALP2 antibody (11-3008) was used at 0.5 µg/ml on (1) A431 and (2) K562 lysates.