

35-1427: EGFR(Ab-1070) Antibody

Clonality :	Polyclonal
Application :	ICC/IF,IHC,WB
Reactivity :	Human
Gene :	IGLC1
Gene ID :	1956
Uniprot ID :	P00533
Alternative Name :	Receptor tyrosine-protein kinase ErbB-1; ERBB1; Proto-oncogene c-ErbB-1
Immunogen Information :	Peptide sequence around aa.1068~1072 (R-Y-S-S-D) derived from Human EGFR.

Description

Receptor for EGF, but also for other members of the EGF family, as TGF- α , amphiregulin, betacellulin, heparin-binding EGF-like growth factor, GP30 and vaccinia virus growth factor. Is involved in the control of cell growth and differentia

Product Info

Amount :	50 μ l / 100 μ l
Purification :	Affinity-chromatography
Content :	Supplied at 1.0mg/mL in phosphate buffered saline (without Mg ²⁺ and Ca ²⁺), pH 7.4, 150mM NaCl, 0.02% sodium azide and 50% glycerol.
Storage condition :	Store at 4°C; For long-term storage; store at -20°C. Avoid repeated freeze and thaw cycles.

Application Note

Predicted MW: 175kd
Western blotting: 1:500~1:1000
Immunohistochemistry: 1:50~1:100
Immunofluorescence: 1:100~1:200

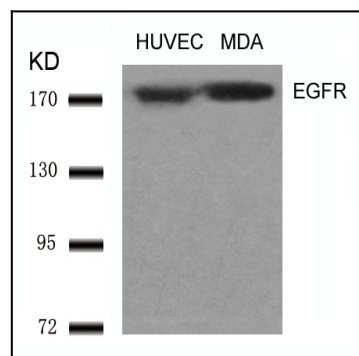


Figure 1: Western blot analysis of extracts from HUVEC and MDA cells using EGFR(Ab-1070) Antibody 35-1427 .

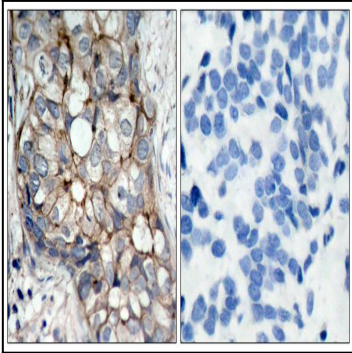


Figure 2: Immunohistochemical analysis of paraffin-embedded human breast carcinoma tissue using EGFR(Ab-1070) Antibody 35-1427 (left) or the same antibody preincubated with blocking peptide(right).

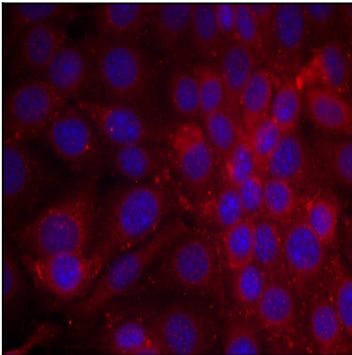


Figure 3: Immunofluorescence staining of methanol-fixed MCF cells using EGFR(Ab-1070) Antibody 35-1427 .