

## 11-1005: Polyclonal Antibody to APG4B

<b>Clonality :</b>	Polyclonal
<b>Application :</b>	WB
<b>Reactivity :</b>	Human
<b>Gene :</b>	ATG4B
<b>Gene ID :</b>	23192
<b>Uniprot ID :</b>	Q9Y4P1
<b>Format :</b>	Purified
<b>Alternative Name :</b>	ATG4B,APG4B,AUTL1,KIAA0943
<b>Isotype :</b>	Rabbit IgG
<b>Immunogen Information :</b>	A partial length recombinant APG4B protein (amino acids 150-393) was used as the immunogen for this antibody.

### Description

APG4B (autophagy related 4B, cysteine peptidase) belongs to autophagin protein family. APG4B splits the C-terminal amino acid of ATG8 family proteins, MAP1LC3, GABARAPL1, GABARAPL2 and GABARAP, to reveal a C-terminal glycine. It has 393 aminoacids recidues. It has 5 isoforms produced by alternative transcriptional splicing. APG4B is mainly expressed in the skeletal muscle, brain, heart, liver and pancreas. It is a Cysteine protease needed for the cytoplasm to vacuole transport (Cvt) and autophagy. APG4B mainly expressed in the skeletal muscle, followed by brain, heart, liver and pancreas.

### Product Info

<b>Amount :</b>	25 µg / 100 µg
<b>Purification :</b>	Protein A Chromatography
<b>Content :</b>	25 µg in 50 µl/100 µg in 200 µl PBS containing 0.05% BSA and 0.05% sodium azide. Sodium azide is highly toxic.
<b>Storage condition :</b>	Store the antibody at 4°C, stable for 6 months. For long-term storage, store at -20°C. Avoid repeated freeze and thaw cycles.

### Application Note

Western blot analysis: 4-6 Åµg/ml

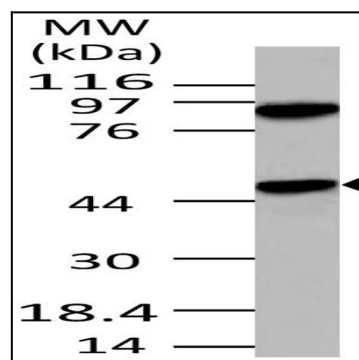


Fig-1: Western blot analysis of APG4B. Anti- APG4B antibody (11-1005) was used at 4 µg/ml on 293 lysate.