

## 10-3021: Monoclonal Antibody to TLR4 (Clone: HTA125)

<b>Clonality :</b>	Monoclonal
<b>Clone Name :</b>	HTA125
<b>Application :</b>	FACS
<b>Reactivity :</b>	Human
<b>Gene :</b>	TLR4
<b>Gene ID :</b>	7099
<b>Uniprot ID :</b>	O00206
<b>Format :</b>	Purified
<b>Alternative Name :</b>	TLR4
<b>Isotype :</b>	Mouse IgG2a, kappa
<b>Immunogen Information :</b>	This antibody was developed by immunizing mice with Ba/F3 cell line expressing human TLR4 cell surface antigen.

### Description

TLR4 (Toll-like receptor-4) is a member of the Toll-like receptor (TLR) family which plays a fundamental role in pathogen recognition and activation of innate immunity. It primarily mediates cellular signaling induced by Gram negative bacteria. TLR4 is highly specific for LPS and it is associated with CD14, a co-receptor for LPS. The downstream signaling pathway of TLR4 leads to the activation of NF-kappaB through myeloid differentiation protein (MyD88) and IL-1 receptor-associated kinase in various cell types. Keratinocytes express TLR4 at the mRNA and protein levels whereas TLR4 are also present in the normal human epidermis in vivo and their expression is regulated by microbial components. TLR4 is expressed on CD4+ T cells as well, the functional significance of which is unclear.

### Product Info

<b>Amount :</b>	25 µg / 100 µg
<b>Purification :</b>	Protein G Chromatography
<b>Content :</b>	25 µg in 50 µl/100 µg in 200 µl PBS containing 0.05% BSA and 0.05% sodium azide. Sodium azide is highly toxic.
<b>Storage condition :</b>	Store the antibody at 4°C, stable for 6 months. For long-term storage, store at -20°C. Avoid repeated freeze and thaw cycles.

### Application Note

FACS analysis: 2-4 µg/10<sup>6</sup>

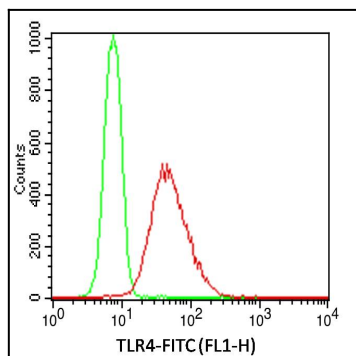


Fig-1: Intracellular flow analysis of hTLR4 antibody in Ramos Cell line using 2  $\mu\text{g}/10^6$  cells of hTLR4 antibody (Clone: HTA125). Green represents isotype control; red represents anti-hTLR4 antibody. Goat anti-mouse FITC conjugate was used as secondary antibody.